

Social area differences in VET participation: Support document

RICHARD TEESE

ANNE WALSTAB

CENTRE FOR POST-COMPULSORY EDUCATION AND
LIFELONG LEARNING, UNIVERSITY OF MELBOURNE

This document was produced by the author(s) based on their research for the report *Social area differences in VET participation*, and is an added resource for further information. The report is available on NCVER's website: <http://www.ncver.edu.au/publications/1997.html>

The views and opinions expressed in this document are those of the author(s) and do not necessarily reflect the views of the Australian Government, state and territory governments or NCVER. Any errors and omissions are the responsibility of the author(s).

© Australian Government, 2008

This work has been produced by the National Centre for Vocational Education Research (NCVER) on behalf of the Australian Government and state and territory governments with funding provided through the Australian Department of Education, Employment and Workplace Relations. Apart from any use permitted under the *Copyright Act 1968*, no part of this publication may be reproduced by any process without written permission. Requests should be made to NCVER.

Contents

Tables and figures	3
Introduction	6
Australia	7
VET participation rates across Australia	7
South Australia	24
VET participation rates across South Australia	24
Queensland	39
VET participation rates across Queensland	39

Tables and figures

Tables

1	Enrolments and per cent participation in VET across Australia, by age groups and gender	7
2	Enrolments and per cent participation in VET across Australia, women by age groups and main qualification	8
3	Enrolments and per cent participation in VET across Australia, men by age groups and main qualification	9
4	Enrolments and per cent participation in VET across Australia, by gender, age groups and SES deciles	11
5	Enrolments and per cent participation in VET across Australia, women, by age groups, SES deciles and main qualification	12
6	Enrolments and per cent participation in VET across Australia, men, by age groups, SES deciles and main qualification	14
7	Enrolments and per cent participation in VET across South Australia, by age groups and gender	24
8	Enrolments and per cent participation in VET across South Australia, women by age groups and main qualification	24
9	Enrolments and per cent participation in VET across South Australia, men by age groups and main qualification	26
10	Enrolments and per cent participation in VET across South Australia, by gender, age groups and SES quartiles	28
11	Enrolments and per cent participation in VET across South Australia, women, by age groups, SES quartiles and main qualification	29
12	Enrolments and per cent participation in VET across South Australia, men, by age groups, SES quartiles and main qualification	31
13	Enrolments and per cent participation in VET across Queensland, by age groups and gender	39
14	Enrolments and per cent participation in VET across Queensland, women by age groups and main qualification	40
15	Enrolments and per cent participation in VET across Queensland, men by age groups and main qualification	41
16	Enrolments and per cent participation in VET across Queensland, by gender, age groups and SES quartiles	43
17	Enrolments and % Participation in VET across Queensland, women, by age groups, SES quartiles and main qualification	44
18	Enrolments and per cent participation in VET across Queensland, men, by age groups, SES quartiles and main qualification	46

Figures

1	Per cent participation in VET by age groups and gender: Australia	7
2	Per cent participation in VET, Australia, women by age groups and main qualification	10
3	Per cent participation in VET, Australia, men by age groups and main qualification	10
4	Per cent participation in VET, women, 15-19 years, Australia, by SES deciles	18
5	Per cent participation in VET, men, 15-19 years, Australia, by SES deciles	18
6	Per cent participation in VET, women, 20-24 years, Australia, by SES deciles	19
7	Per cent participation in VET, men, 20-24 years, Australia, by SES deciles	19
8	Per cent participation in VET, women, 25-29 years, Australia, by SES deciles	20
9	Per cent participation in VET, men, 25-29 years, Australia, by SES deciles	20
10	Per cent participation in VET, women, 30-39 years, Australia, by SES deciles	21
11	Per cent participation in VET, men, 30-39 years, Australia, by SES deciles	21
12	Per cent participation in VET, women, 40-49 years, Australia, by SES deciles	22
13	Per cent participation in VET, men, 40-49 years, Australia, by SES deciles	22
14	Per cent participation in VET, women, 50-59 years, Australia, by SES deciles	23
15	Per cent participation in VET, men, 50-59 years, Australia, by SES deciles	23
16	Per cent participation in VET by age groups and gender: South Australia	24
17	Per cent participation in VET, South Australia, women by age groups and main qualification	27
18	Per cent participation in VET, South Australia, men by age groups and main qualification	27
19	Per cent participation in VET, women, 15-19 years, South Australia	33
20	Per cent participation in VET, men, 15-19 years, South Australia	33
21	Per cent participation in VET, women, 20-24 years, South Australia	34
22	Per cent participation in VET, men, 20-24 years, South Australia	34
23	Per cent participation in VET, women, 25-29 years, South Australia	35
24	Per cent participation in VET, men, 25-29 years, South Australia	35
25	Per cent participation in VET, women, 30-39 years, South Australia	36
26	Per cent participation in VET, men, 30-39 years, South Australia	36
27	Per cent participation in VET, women, 40-49 years, South Australia	37
28	Per cent participation in VET, men, 40-49 years, South Australia	37

29	Per cent participation in VET, women, 50-59 years, South Australia	38
30	Per cent participation in VET, women, 50-59 years, South Australia	38
31	Per cent participation in VET by age groups and gender: Queensland	39
32	Per cent participation in VET, Queensland, women by age groups and main qualification	42
33	Per cent participation in VET, Queensland, men by age groups and main qualification	42
34	Per cent participation in VET, women, 15-19 years, Queensland, by SES quartiles	48
35	Per cent participation in VET, men, 15-19 years, Queensland, by SES quartiles	48
36	Per cent participation in VET, women, 20-24 years, Queensland, by SES quartiles	49
37	Per cent participation in VET, men, 20-24 years, Queensland, by SES quartiles	49
38	Per cent participation in VET, women, 25-29 years, Queensland, by SES quartiles	50
39	Per cent participation in VET, men, 25-29 years, Queensland, by SES quartiles	50
40	Per cent participation in VET, women, 30-39 years, Queensland, by SES quartiles	51
41	Per cent participation in VET, men, 30-39 years, Queensland, by SES quartiles	51
42	Per cent participation in VET, women, 40-49 years, Queensland, by SES quartiles	52
43	Per cent participation in VET, men, 40-49 years, Queensland, by SES quartiles	52
44	Per cent participation in VET, women, 50-59 years, Queensland, by SES quartiles	53
45	Per cent participation in VET, men, 50-59 years, Queensland, by SES quartiles	53

Introduction

1. The aim of this part of the report is to present a series of tables and charts which measure levels of participation in Vocational Education and Training (VET) across Australia. The project employs a social area methodology in which participation rates are estimated for populations in postal districts and the census characteristics of these districts are used to classify and group areas for comparison. To estimate participation rates, the number of enrolments in VET within each postcode across Australia was extracted from AVETMISS by NCVET. All VET enrolments are included in this dataset. The reference year for the study is 2001. The Australian Bureau of Statistics supplied population estimates of different age-groups (Estimated Residential Population), for 2001. Participation rates were calculated at various award levels and separately for males and females of different ages.
2. Postal districts across Australia were ranked using the ABS Index of Relative Socio-Economic Disadvantage (2001) and grouped into equal tenth bands. The VET cohort was then grouped according to these deciles, and participation rates calculated for each. The lowest SES decile represents the poorest students and the highest SES band represents the most wealthy students. This procedure was repeated within states and territories, where SES quartiles are constructed by ranking postal districts across the state and then divided into four equal bands. Assigning individuals an index of disadvantage based on their residential postcode assumes a homogeneity across the district. However, individual addresses at census collection district level are not available.
3. The participation rates for the whole of Australia presented in the first section of this report are followed by two example states, South Australia and Queensland. Enrolments missing key variables have been excluded from the analysis (3.9% of the total cohort).

VET participation rates across Australia

Table 1 Enrolments and per cent participation in VET across Australia, by age groups and gender

age groups	VET (no. enrolments)			% Participation		
	female	male	total	female	male	total
15-19 yrs	189252	226230	415482	28.6	32.8	30.7
20-24	116088	150008	266096	18.1	22.7	20.4
25-29	86994	98455	185449	12.3	14.0	13.2
30-39	164441	164399	328840	11.0	11.2	11.1
40-49	151892	124366	276258	10.6	8.8	9.7
50-59	77712	69995	147707	6.8	6.0	6.4
60-64	14018	13318	27336	3.4	3.2	3.3
65 yrs & over	15394	13570	28964	1.1	1.3	1.2

Figure 1 Per cent participation in VET by age groups and gender: Australia

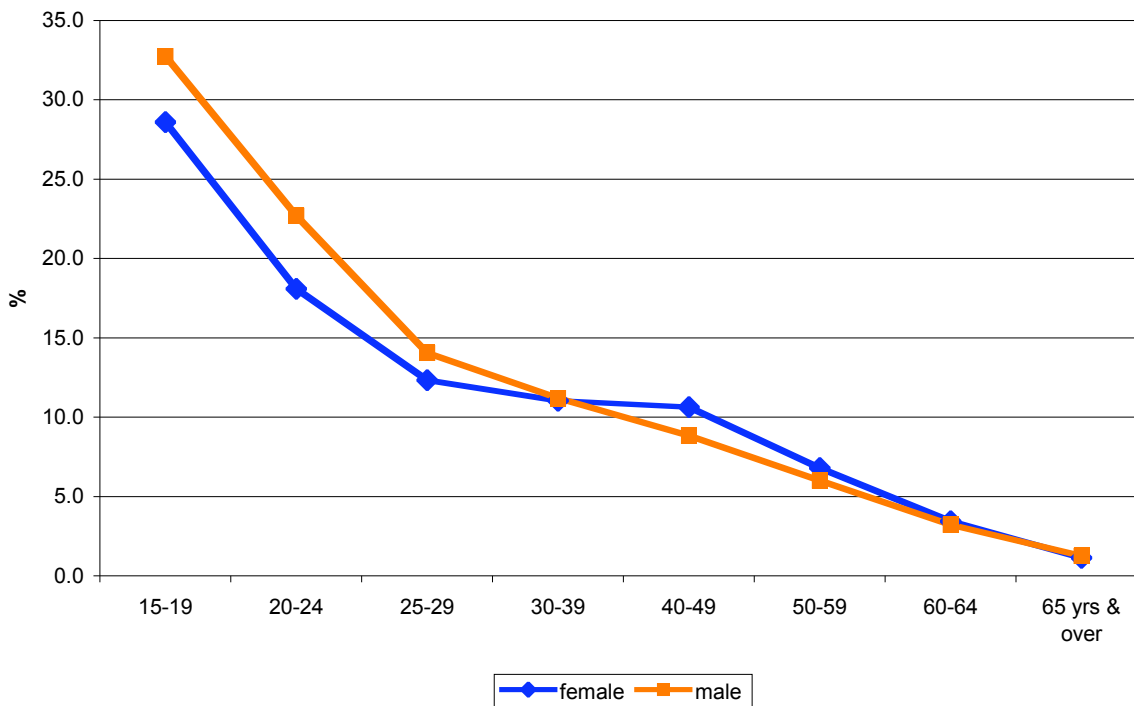


Table 2 Enrolments and per cent participation in VET across Australia, women by age groups and main qualification

WOMEN

	<i>VET (no. enrolments)</i>							
	<i>15-19yrs</i>	<i>20-24</i>	<i>25-29</i>	<i>30-39</i>	<i>40-49</i>	<i>50-59</i>	<i>60-64</i>	<i>65 yrs & over</i>
NON-AWD	16234	11329	12792	24617	24677	16358	3460	4017
SUBJECT ONLY	3432	3890	4879	12929	13698	10655	3252	4810
STATEMT	9845	7951	6856	15610	15887	8525	1785	1995
CERT I	13065	5557	4884	9971	9630	5225	1249	1438
CERT II	74028	19182	12704	24651	22975	10771	1662	1507
CERT III	40391	29381	17447	31460	28146	11963	1340	824
SENIOR	849	353	136	152	93	28	10	7
CERT IV	11418	14522	13162	23860	21071	8467	715	421
DIPLOMA	15681	17299	10613	16231	12530	4633	457	331
ADV DIP	4211	6273	3231	4641	2909	963	82	42
BACHELOR	92	215	85	102	81	49	4	2
POST GRAD	6	136	205	217	195	75	2	
Total	189252	116088	86994	164441	151892	77712	14018	15394

	<i>% Participation</i>							
	<i>15-19yrs</i>	<i>20-24</i>	<i>25-29</i>	<i>30-39</i>	<i>40-49</i>	<i>50-59</i>	<i>60-64</i>	<i>65 yrs & over</i>
NON-AWD	2.5	1.8	1.8	1.7	1.7	1.4	0.8	0.3
SUBJECT ONLY	0.5	0.6	0.7	0.9	1.0	0.9	0.8	0.4
STATEMT	1.5	1.2	1.0	1.0	1.1	0.7	0.4	0.1
CERT I	2.0	0.9	0.7	0.7	0.7	0.5	0.3	0.1
CERT II	11.2	3.0	1.8	1.7	1.6	0.9	0.4	0.1
CERT III	6.1	4.6	2.5	2.1	2.0	1.0	0.3	0.1
SENIOR	0.1	0.1	0.0	0.0	0.0	0.0	0.0	0.0
CERT IV	1.7	2.3	1.9	1.6	1.5	0.7	0.2	0.0
DIPLOMA	2.4	2.7	1.5	1.1	0.9	0.4	0.1	0.0
ADV DIP	0.6	1.0	0.5	0.3	0.2	0.1	0.0	0.0
BACHELOR	0.0	0.0	0.0	0.0	0.0	0.0	0.0	0.0
POST GRAD	0.0	0.0	0.0	0.0	0.0	0.0	0.0	0.0
Total	28.6	18.1	12.3	11.0	10.6	6.8	3.4	1.1

Table 3 Enrolments and per cent participation in VET across Australia, men by age groups and main qualification

MEN

	<i>VET (no. enrolments)</i>							
	<i>15-19yrs</i>	<i>20-24</i>	<i>25-29</i>	<i>30-39</i>	<i>40-49</i>	<i>50-59</i>	<i>60-64</i>	<i>65 yrs & over</i>
NON-AWD	16872	12454	13994	27612	24183	17039	3411	3824
SUBJECT ONLY	2992	2346	2649	5792	5361	4534	1570	3018
STATEMT	15573	11250	10850	20244	17628	10521	2314	2380
CERT I	24055	7151	5786	9719	7058	4049	924	1139
CERT II	66466	22836	16589	26284	18338	9978	1735	1420
CERT III	68112	53024	21356	30384	20660	10426	1599	871
SENIOR	635	338	88	84	33	11	2	7
CERT IV	12045	15827	12705	23070	18277	8607	1145	509
DIPLOMA	14184	17144	10528	15886	9840	3709	464	326
ADV DIP	5265	7471	3743	5025	2826	1057	147	74
BACHELOR	25	117	51	75	28	15	3	2
POST GRAD	6	50	116	224	134	49	4	
Total	226230	150008	98455	164399	124366	69995	13318	13570

	<i>% Participation</i>							
	<i>15-19yrs</i>	<i>20-24</i>	<i>25-29</i>	<i>30-39</i>	<i>40-49</i>	<i>50-59</i>	<i>60-64</i>	<i>65 yrs & over</i>
NON-AWD	2.4	1.9	2.0	1.9	1.7	1.5	0.8	0.4
SUBJECT ONLY	0.4	0.4	0.4	0.4	0.4	0.4	0.4	0.3
STATEMT	2.3	1.7	1.5	1.4	1.3	0.9	0.6	0.2
CERT I	3.5	1.1	0.8	0.7	0.5	0.3	0.2	0.1
CERT II	9.6	3.5	2.4	1.8	1.3	0.9	0.4	0.1
CERT III	9.9	8.0	3.0	2.1	1.5	0.9	0.4	0.1
SENIOR	0.1	0.1	0.0	0.0	0.0	0.0	0.0	0.0
CERT IV	1.7	2.4	1.8	1.6	1.3	0.7	0.3	0.0
DIPLOMA	2.1	2.6	1.5	1.1	0.7	0.3	0.1	0.0
ADV DIP	0.8	1.1	0.5	0.3	0.2	0.1	0.0	0.0
BACHELOR	0.0	0.0	0.0	0.0	0.0	0.0	0.0	0.0
POST GRAD	0.0	0.0	0.0	0.0	0.0	0.0	0.0	0.0
Total	32.8	22.7	14.0	11.2	8.8	6.0	3.2	1.3

Figure 2 Per cent participation in VET, Australia, women by age groups and main qualification

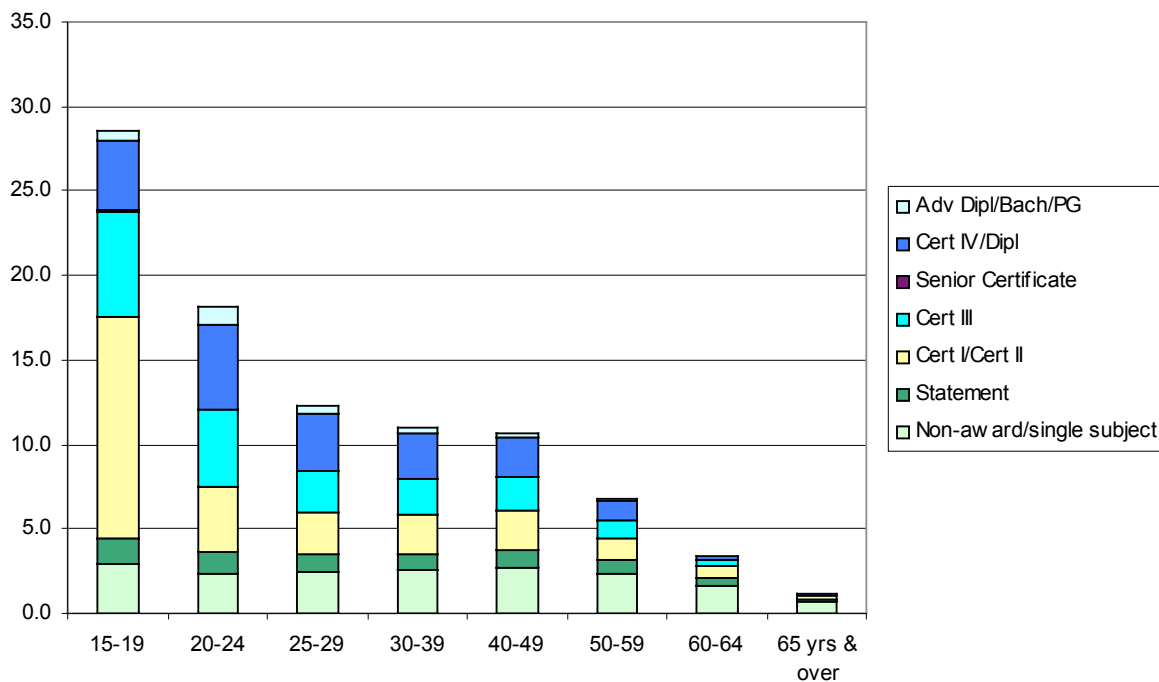


Figure 3 Per cent participation in VET, Australia, men by age groups and main qualification

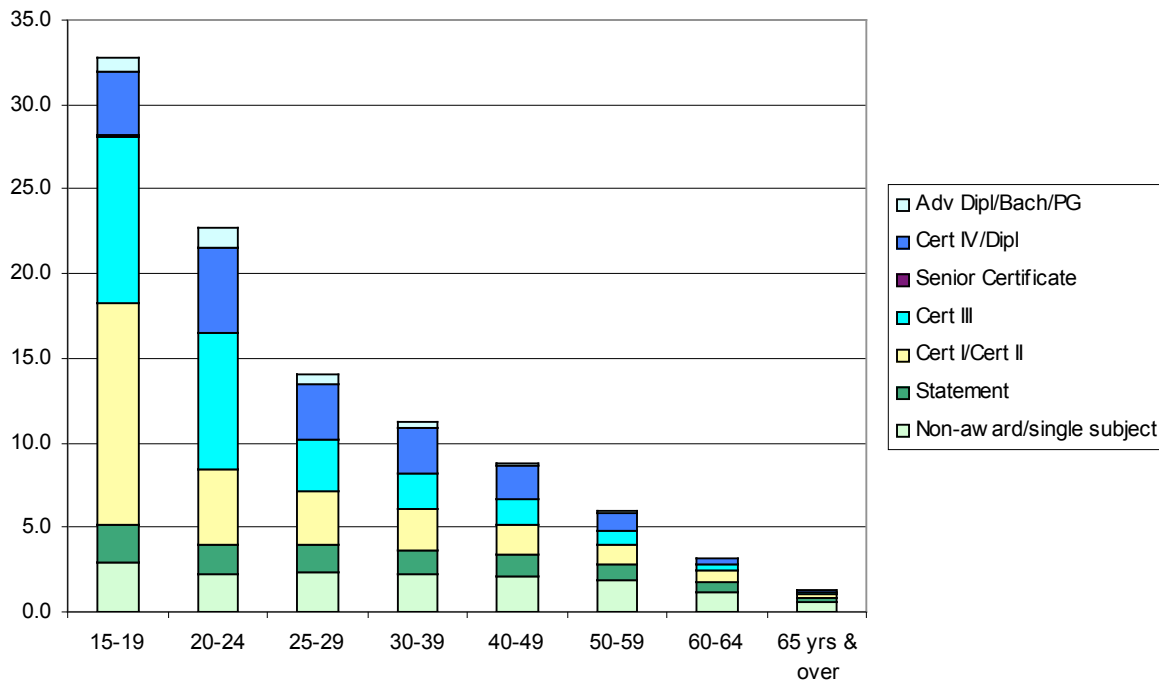


Table 4 Enrolments and per cent participation in VET across Australia, by gender, age groups and SES deciles

	VET (no. enrolments)									
	SES deciles									
	1 (lowest)	2	3	4	5	6	7	8	9	10 (highest)
WOMEN										
15-19 yrs	21030	23148	20070	20939	20946	18563	14515	13684	16008	15373
20-24	13112	11818	10285	10603	11478	11115	8592	8770	12407	12304
25-29	9820	8916	7752	7747	8897	8310	6737	6492	9706	9287
30-39	17698	18627	16689	16560	18112	16276	12995	12174	16575	14976
40-49	14416	17447	15770	15533	16960	15153	11914	11734	15286	15065
50-59	6321	8205	7925	7803	8597	7857	6182	6022	8025	9405
60-64	1154	1399	1491	1427	1539	1425	1069	1111	1538	1674
65 yrs & over	1088	1439	1634	1486	1658	1620	1179	1191	1781	2102
MEN										
15-19 yrs	23765	27377	23368	25278	24829	22340	17445	16967	19889	18462
20-24	16566	15649	13464	14101	15169	14206	11348	11446	15353	15272
25-29	11172	10732	9038	9623	9877	9573	7474	7297	9971	9103
30-39	18347	19077	17121	17084	17691	16515	12848	11979	15889	12334
40-49	12677	14895	13760	13642	13934	12640	10007	9225	11152	9089
50-59	6359	8067	7430	7757	7860	7110	5567	5440	6367	6292
60-64	1069	1447	1477	1456	1525	1334	988	1004	1327	1363
65 yrs & over	1011	1361	1484	1366	1512	1364	1046	1033	1484	1659

	% Participation									
	SES deciles									
	1 (lowest)	2	3	4	5	6	7	8	9	10 (highest)
WOMEN										
15-19 yrs	30.3	32.8	34.1	33.4	30.8	29.6	27.4	25.3	20.9	17.9
20-24	18.9	18.7	19.9	18.5	18.4	18.0	16.7	16.8	15.0	13.7
25-29	13.2	12.7	13.2	12.0	12.8	12.3	11.5	11.2	10.6	10.0
30-39	12.1	12.4	13.0	11.8	12.1	11.5	10.3	9.6	8.9	7.7
40-49	10.9	11.8	12.5	11.6	11.7	11.3	10.2	9.6	8.9	7.6
50-59	6.0	6.8	7.6	7.3	7.5	7.3	6.9	6.2	6.0	5.6
60-64	2.8	3.0	3.6	3.5	3.7	3.7	3.5	3.4	3.4	3.3
65 yrs & over	0.9	0.9	1.2	1.1	1.2	1.2	1.2	1.1	1.1	1.2
MEN										
15-19	32.8	36.8	37.4	37.9	34.8	33.9	31.8	30.1	25.7	21.0
20-24	23.7	23.9	25.0	23.6	23.5	22.3	21.2	21.2	18.3	16.8
25-29	15.3	15.5	15.6	14.9	14.4	14.2	12.8	12.5	10.9	10.0
30-39	12.1	12.9	13.5	12.3	12.1	11.8	10.4	9.6	8.6	6.7
40-49	9.4	10.1	10.8	10.1	9.7	9.6	8.6	7.8	6.6	4.9
50-59	5.9	6.5	7.0	7.0	6.7	6.6	6.0	5.5	4.7	3.8
60-64	2.6	3.0	3.6	3.5	3.6	3.4	3.1	3.0	3.0	2.6
65 yrs & over	1.0	1.1	1.3	1.2	1.4	1.3	1.3	1.2	1.2	1.3

Table 5 Enrolments and per cent participation in VET across Australia, women, by age groups, SES deciles and main qualification

WOMEN		VET (no. enrolments)									
		SES deciles									
		1(lowest)	2	3	4	5	6	7	8	9	10 (highest)
15-19 yrs	NON-AWD	1957	1448	1543	1906	1415	1365	1052	1498	1942	1535
	SUBJECT ONLY	422	291	404	251	350	492	476	253	237	180
	STATEMT	1173	1639	1064	1492	1122	872	528	381	694	809
	CERT I	1817	1733	1559	1346	1572	1305	868	801	854	883
	CERT II	8257	10389	8413	8757	8869	7186	5568	5000	5063	5171
	CERT III	4068	4925	4383	4642	4732	4120	3355	2856	3313	3102
	SENIOR	133	57	50	41	53	93	60	81	122	120
	CERT IV	1163	1045	1037	1068	1129	1217	895	1020	1271	1167
	DIPLOMA	1574	1366	1382	1231	1463	1606	1385	1394	1832	1792
	ADV DIP	462	245	229	197	237	298	318	392	661	596
	BACHELOR	2	10	4	7	4	9	10	8	19	18
	POST GRAD	2		2	1						
	Total		21030	23148	20070	20939	20946	18563	14515	13684	16008
20-24 yrs	NON-AWD	976	973	886	1053	1210	964	896	858	1422	1528
	SUBJECT ONLY	503	335	408	249	451	456	306	241	395	461
	STATEMT	919	1113	792	1031	818	808	384	411	749	849
	CERT I	948	652	499	520	502	473	366	333	511	490
	CERT II	2477	2278	2069	1958	2087	1838	1389	1360	1559	1390
	CERT III	3217	3156	2798	2882	3131	2955	2333	2301	2929	2739
	SENIOR	74	29	20	21	27	43	28	32	40	31
	CERT IV	1571	1433	1243	1331	1364	1399	1069	1223	1691	1607
	DIPLOMA	1710	1460	1265	1213	1543	1751	1399	1441	2108	2171
	ADV DIP	695	373	294	321	329	397	403	538	933	977
	BACHELOR	11	4	9	22	8	24	11	26	44	35
	POST GRAD	11	12	2	2	8	7	8	6	26	26
	Total		13112	11818	10285	10603	11478	11115	8592	8770	12407
25-29 yrs	NON-AWD	1045	1123	1003	1095	1252	1105	1065	1042	1760	1778
	SUBJECT ONLY	588	364	437	271	504	627	455	372	499	642
	STATEMT	936	984	640	843	716	676	351	335	633	652
	CERT I	878	593	448	438	408	434	340	293	455	408
	CERT II	1837	1496	1349	1233	1478	1152	931	796	1066	899
	CERT III	2034	1913	1669	1697	1913	1707	1418	1312	1761	1459
	SENIOR	17	12	9	5	10	22	10	11	19	21
	CERT IV	1249	1316	1131	1161	1303	1291	1020	1073	1583	1586
	DIPLOMA	891	873	883	805	1087	1021	902	941	1382	1231
	ADV DIP	330	232	175	186	213	252	225	298	499	513
	BACHELOR	3	2	4	7	1	9	6	4	11	29
	POST GRAD	12	8	4	6	12	14	14	15	38	69
	Total		9820	8916	7752	7747	8897	8310	6737	6492	9706
30-39 yrs	NON-AWD	1971	2508	2112	2297	2719	2162	2015	2014	3168	2982
	SUBJECT ONLY	1293	900	1198	855	1320	1753	1313	1242	1385	1392
	STATEMT	2213	2354	1593	1963	1772	1385	904	759	1309	1210
	CERT I	1560	1241	1025	971	991	950	721	597	916	769
	CERT II	3255	3078	2818	2749	3053	2415	1865	1450	1879	1573
	CERT III	3422	4005	3623	3535	3602	3196	2526	2226	2585	2055
	SENIOR	10	14	13	12	9	21	22	19	11	21
	CERT IV	2130	2567	2396	2415	2626	2319	1865	1940	2618	2450
	DIPLOMA	1394	1546	1585	1427	1659	1647	1390	1439	1889	1772
	ADV DIP	429	394	309	323	343	398	353	467	749	671
	BACHELOR	3	3	5	4	5	12	9	9	23	25
	POST GRAD	18	17	12	9	13	18	12	12	43	56
	Total		17698	18627	16689	16560	18112	16276	12995	12174	16575

WOMEN		VET (no. enrolments)									
		SES deciles									
		1 (lowest)	2	3	4	5	6	7	8	9	10 (highest)
40-49 yrs	NON-AWD	1761	2800	2327	2425	2839	2231	2046	2035	2755	2967
	SUBJECT ONLY	1119	857	1294	961	1376	1938	1337	1485	1579	1458
	STATEMT	2013	2231	1733	1928	1760	1455	951	805	1367	1531
	CERT I	1353	1205	948	963	973	889	683	583	951	948
	CERT II	2547	2905	2468	2537	2900	2230	1729	1452	1936	1852
	CERT III	2875	3568	3200	3222	3135	2759	2228	2173	2435	2041
	SENIOR	12	12	7	3	7	11	4	16	12	9
	CERT IV	1648	2415	2235	2071	2337	2078	1673	1759	2223	2259
	DIPLOMA	881	1190	1324	1203	1402	1297	1020	1120	1465	1418
	ADV DIP	193	237	213	193	203	242	225	293	523	521
	BACHELOR	3	2	5	13	8	9	4	3	12	21
	POST GRAD	11	25	16	14	20	14	14	10	28	40
Total	14416	17447	15770	15533	16960	15153	11914	11734	15286	15065	
50-59 yrs	NON-AWD	952	1782	1555	1600	1916	1414	1311	1274	1821	2409
	SUBJECT ONLY	762	640	941	745	1042	1506	1052	1213	1227	1317
	STATEMT	961	1145	964	1079	930	839	500	404	745	896
	CERT I	678	622	478	536	476	469	400	328	539	629
	CERT II	1022	1224	1191	1127	1399	1097	831	676	929	1101
	CERT III	1078	1399	1397	1393	1283	1167	987	895	1122	1025
	SENIOR	3	2	4	1	1	3	3	3	5	3
	CERT IV	503	891	839	832	920	810	652	738	914	1183
	DIPLOMA	302	432	480	422	546	469	364	387	510	613
	ADV DIP	56	63	64	62	68	75	80	94	189	193
	BACHELOR		1	1	4	5	6	1	3	9	18
	POST GRAD	4	4	11	2	11	2	1	7	15	18
Total	6321	8205	7925	7803	8597	7857	6182	6022	8025	9405	
60-64 yrs	NON-AWD	198	380	375	353	424	313	272	238	361	492
	SUBJECT ONLY	230	192	297	222	318	408	338	394	434	370
	STATEMT	250	235	214	239	186	188	91	90	137	141
	CERT I	171	131	112	105	111	105	80	80	166	174
	CERT II	146	179	204	202	211	169	99	98	157	177
	CERT III	103	160	156	164	137	113	100	89	136	153
	SENIOR	1	3	2	1	1	1	1			
	CERT IV	30	66	68	81	80	75	45	75	83	107
	DIPLOMA	19	48	53	56	60	48	35	39	44	50
	ADV DIP	6	5	10	4	11	5	7	7	16	10
	BACHELOR							1	1	2	
	POST GRAD									2	
Total	1154	1399	1491	1427	1539	1425	1069	1111	1538	1674	
65 yrs & over	NON-AWD	230	459	421	412	520	379	238	243	435	621
	SUBJECT ONLY	271	297	489	348	397	632	451	540	647	672
	STATEMT	237	237	257	257	219	207	144	108	165	153
	CERT I	155	141	120	117	125	112	109	93	207	241
	CERT II	101	152	144	190	211	135	96	82	159	210
	CERT III	50	92	115	99	93	87	71	56	81	63
	SENIOR	1	1	1		1	1	1	1		
	CERT IV	18	32	34	33	43	38	33	43	46	93
	DIPLOMA	24	26	48	30	46	25	32	22	30	39
	ADV DIP	1	2	5		3	4	4	3	11	8
	BACHELOR										2
	Total	1088	1439	1634	1486	1658	1620	1179	1191	1781	2102

Table 6 Enrolments and per cent participation in VET across Australia, men, by age groups, SES deciles and main qualification

MEN		VET (no. enrolments)									
		SES deciles									
		1 (lowest)	2	3	4	5	6	7	8	9	10 (highest)
15-19 yrs	NON-AWD	1973	1574	1488	2303	1691	1474	1095	1354	1853	1361
	SUBJECT ONLY	408	283	361	294	295	383	385	167	175	146
	STATEMT	1877	2785	1817	2347	1802	1361	806	616	917	1089
	CERT I	2982	3079	2890	2725	2725	2317	1695	1621	1789	1638
	CERT II	7111	9044	7607	7512	7642	6506	4957	4871	4903	4678
	CERT III	6067	7939	6811	7635	7829	7432	5821	5470	6259	5500
	SENIOR	86	19	31	34	36	61	45	69	94	105
	CERT IV	1153	1155	997	1212	1222	1120	986	1008	1267	1267
	DIPLOMA	1469	1131	1060	918	1243	1272	1230	1295	1881	1894
	ADV DIP	636	366	305	297	341	409	425	495	747	774
	BACHELOR		2	1	1	3	5			3	9
	POST GRAD	3							1	1	1
Total		23765	27377	23368	25278	24829	22340	17445	16967	19889	18462
20-24 yrs	NON-AWD	1319	1095	1065	1624	1189	1129	1004	979	1309	1164
	SUBJECT ONLY	364	203	251	232	236	276	169	136	188	192
	STATEMT	1207	1621	1218	1457	1323	1105	662	531	916	1021
	CERT I	1250	934	712	611	689	581	480	384	572	454
	CERT II	2845	2926	2499	2159	2572	2304	1647	1594	1727	1534
	CERT III	5257	5644	5032	4950	5775	5342	4375	4414	5653	5308
	SENIOR	61	21	13	18	30	34	28	33	38	52
	CERT IV	1563	1436	1199	1561	1515	1483	1156	1277	1796	1917
	DIPLOMA	1845	1281	1114	1093	1332	1455	1301	1456	2173	2449
	ADV DIP	829	481	357	386	505	488	518	638	954	1145
	BACHELOR	16	2	2	6	1	8	5	4	19	33
	POST GRAD	10	5	2	4	2	1	3		8	3
Total		16566	15649	13464	14101	15169	14206	11348	11446	15353	15272
25-29 yrs	NON-AWD	1472	1227	1158	1696	1320	1290	1131	1136	1563	1424
	SUBJECT ONLY	375	214	234	206	246	297	207	188	268	286
	STATEMT	1214	1541	1128	1396	1238	1050	731	511	999	868
	CERT I	972	810	543	500	518	478	382	301	454	370
	CERT II	2111	2368	1831	1627	1778	1670	1262	1107	1117	980
	CERT III	2464	2325	2020	1933	2225	2205	1694	1662	2131	1910
	SENIOR	12	6	6	4	12	10	4	14	9	8
	CERT IV	1205	1198	1041	1272	1323	1276	938	1052	1506	1395
	DIPLOMA	933	773	869	737	918	1010	837	946	1388	1331
	ADV DIP	385	259	203	243	289	271	284	371	512	504
	BACHELOR	14	1	2	1	2	1	1	2	6	10
	POST GRAD	15	10	3	8	8	15	3	7	18	17
Total		11172	10732	9038	9623	9877	9573	7474	7297	9971	9103
30-39 yrs	NON-AWD	2579	2642	2574	3300	2784	2760	2236	2257	3175	2411
	SUBJECT ONLY	723	409	522	404	589	763	499	510	577	559
	STATEMT	2154	3021	2612	2621	2551	1762	1303	983	1529	1345
	CERT I	1626	1364	1067	920	931	873	660	497	712	496
	CERT II	3468	3688	3070	2721	2850	2791	2076	1650	1854	1240
	CERT III	3707	3711	3315	2996	3380	3071	2330	2155	2749	1972
	SENIOR	10	9	3	6	4	15	8	6	9	12
	CERT IV	2070	2381	2154	2435	2589	2337	1911	1928	2486	2109
	DIPLOMA	1401	1408	1444	1304	1562	1707	1391	1458	2042	1567
	ADV DIP	575	410	347	359	426	418	418	518	698	569
	BACHELOR	4	4	4	8	2	4	2	4	22	15
	POST GRAD	30	30	9	10	23	14	14	13	36	39
Total		18347	19077	17121	17084	17691	16515	12848	11979	15889	12334

MEN		VET (no. enrolments)									
		SES deciles									
		1 (lowest)	2	3	4	5	6	7	8	9	10 (highest)
40-49 yrs	NON-AWD	1912	2480	2370	2853	2618	2382	2116	2051	2647	2076
	SUBJECT ONLY	503	378	543	387	591	770	517	506	515	485
	STATEMT	1789	2649	2338	2346	2259	1576	1166	900	1155	1164
	CERT I	1101	1037	838	726	639	645	486	382	525	418
	CERT II	2310	2583	2134	1950	2104	1894	1515	1150	1239	961
	CERT III	2392	2633	2284	2197	2322	2109	1624	1537	1757	1187
	SENIOR	4	3	2	2	2	3	3	2	5	7
	CERT IV	1545	1975	1997	2074	2105	1890	1475	1480	1764	1492
	DIPLOMA	823	874	1018	873	1046	1072	865	931	1141	929
	ADV DIP	283	264	225	225	235	290	229	273	380	334
	BACHELOR	2	1	2	4	1	1	2	1	9	5
	POST GRAD	13	18	9	5	12	8	9	12	15	31
Total	12677	14895	13760	13642	13934	12640	10007	9225	11152	9089	
50-59 yrs	NON-AWD	1266	1691	1560	1856	1849	1698	1462	1480	1730	1999
	SUBJECT ONLY	346	279	426	353	514	595	446	495	474	505
	STATEMT	992	1536	1390	1489	1336	952	664	534	724	760
	CERT I	563	564	493	397	403	392	261	238	299	321
	CERT II	1142	1352	1116	1095	1169	1003	771	640	763	671
	CERT III	1127	1241	1103	1136	1136	1034	841	827	958	696
	SENIOR	1		2			2	2	1	2	1
	CERT IV	548	942	887	1023	940	953	709	739	827	795
	DIPLOMA	255	363	373	321	405	380	324	369	437	388
	ADV DIP	113	94	78	83	100	98	82	113	145	138
	BACHELOR	2				3		1	2		7
	POST GRAD	4	5	2	4	5	3	4	2	8	11
Total	6359	8067	7430	7757	7860	7110	5567	5440	6367	6292	
60-64 yrs	NON-AWD	210	334	330	366	388	303	282	277	395	437
	SUBJECT ONLY	109	95	140	105	163	199	147	190	191	199
	STATEMT	195	326	310	331	298	240	132	122	145	171
	CERT I	110	124	85	113	91	83	52	53	93	96
	CERT II	168	230	208	201	175	179	128	101	169	142
	CERT III	163	174	206	161	202	144	120	103	149	111
	SENIOR			1						1	
	CERT IV	73	94	130	128	152	130	79	98	95	138
	DIPLOMA	32	55	55	42	39	45	36	41	61	48
	ADV DIP	8	15	12	9	17	10	11	19	24	21
	BACHELOR	1								2	
	POST GRAD						1	1		2	
Total	1069	1447	1477	1456	1525	1334	988	1004	1327	1363	
65 yrs & over	NON-AWD	224	404	410	400	460	341	307	250	444	517
	SUBJECT ONLY	199	177	276	187	271	382	285	362	405	417
	STATEMT	244	303	344	346	272	251	152	107	171	160
	CERT I	103	139	94	103	105	101	76	81	143	177
	CERT II	125	169	177	136	189	120	86	92	146	149
	CERT III	65	84	96	100	117	84	66	53	87	95
	SENIOR					1	3			3	
	CERT IV	32	46	43	50	62	52	43	43	33	90
	DIPLOMA	17	37	39	39	32	20	23	38	38	37
	ADV DIP	2	2	5	5	3	10	8	6	14	16
	BACHELOR								1		1
	Total	1011	1361	1484	1366	1512	1364	1046	1033	1484	1659

MEN

		% participation									
		SES deciles									
		1	2	3	4	5	6	7	8	9	10
		(lowest)									(highest)
15-19 yrs	NON-AWD	2.7	2.1	2.4	3.5	2.4	2.2	2.0	2.4	2.4	1.5
	SUBJECT ONLY	0.6	0.4	0.6	0.4	0.4	0.6	0.7	0.3	0.2	0.2
	STATEMT	2.6	3.7	2.9	3.5	2.5	2.1	1.5	1.1	1.2	1.2
	CERT I	4.1	4.1	4.6	4.1	3.8	3.5	3.1	2.9	2.3	1.9
	CERT II	9.8	12.1	12.2	11.3	10.7	9.9	9.0	8.6	6.3	5.3
	CERT III	8.4	10.7	10.9	11.4	11.0	11.3	10.6	9.7	8.1	6.3
	SENIOR	0.1	0.0	0.0	0.1	0.1	0.1	0.1	0.1	0.1	0.1
	CERT IV	1.6	1.6	1.6	1.8	1.7	1.7	1.8	1.8	1.6	1.4
	DIPLOMA	2.0	1.5	1.7	1.4	1.7	1.9	2.2	2.3	2.4	2.2
	ADV DIP	0.9	0.5	0.5	0.4	0.5	0.6	0.8	0.9	1.0	0.9
	BACHELOR	0.0	0.0	0.0	0.0	0.0	0.0	0.0	0.0	0.0	0.0
	POST GRAD	0.0	0.0	0.0	0.0	0.0	0.0	0.0	0.0	0.0	0.0
	Total		32.8	36.8	37.4	37.9	34.8	33.9	31.8	30.1	25.7
20-24 yrs	NON-AWD	1.9	1.7	2.0	2.7	1.8	1.8	1.9	1.8	1.6	1.3
	SUBJECT ONLY	0.5	0.3	0.5	0.4	0.4	0.4	0.3	0.3	0.2	0.2
	STATEMT	1.7	2.5	2.3	2.4	2.1	1.7	1.2	1.0	1.1	1.1
	CERT I	1.8	1.4	1.3	1.0	1.1	0.9	0.9	0.7	0.7	0.5
	CERT II	4.1	4.5	4.6	3.6	4.0	3.6	3.1	2.9	2.1	1.7
	CERT III	7.5	8.6	9.3	8.3	9.0	8.4	8.2	8.2	6.7	5.8
	SENIOR	0.1	0.0	0.0	0.0	0.0	0.1	0.1	0.1	0.0	0.1
	CERT IV	2.2	2.2	2.2	2.6	2.4	2.3	2.2	2.4	2.1	2.1
	DIPLOMA	2.6	2.0	2.1	1.8	2.1	2.3	2.4	2.7	2.6	2.7
	ADV DIP	1.2	0.7	0.7	0.6	0.8	0.8	1.0	1.2	1.1	1.3
	BACHELOR	0.0	0.0	0.0	0.0	0.0	0.0	0.0	0.0	0.0	0.0
	POST GRAD	0.0	0.0	0.0	0.0	0.0	0.0	0.0	0.0	0.0	0.0
	Total		23.7	23.9	25.0	23.6	23.5	22.3	21.2	21.2	18.3
25-29 yrs	NON-AWD	2.0	1.8	2.0	2.6	1.9	1.9	1.9	1.9	1.7	1.6
	SUBJECT ONLY	0.5	0.3	0.4	0.3	0.4	0.4	0.4	0.3	0.3	0.3
	STATEMT	1.7	2.2	1.9	2.2	1.8	1.6	1.3	0.9	1.1	1.0
	CERT I	1.3	1.2	0.9	0.8	0.8	0.7	0.7	0.5	0.5	0.4
	CERT II	2.9	3.4	3.2	2.5	2.6	2.5	2.2	1.9	1.2	1.1
	CERT III	3.4	3.4	3.5	3.0	3.2	3.3	2.9	2.9	2.3	2.1
	SENIOR	0.0	0.0	0.0	0.0	0.0	0.0	0.0	0.0	0.0	0.0
	CERT IV	1.6	1.7	1.8	2.0	1.9	1.9	1.6	1.8	1.6	1.5
	DIPLOMA	1.3	1.1	1.5	1.1	1.3	1.5	1.4	1.6	1.5	1.5
	ADV DIP	0.5	0.4	0.4	0.4	0.4	0.4	0.5	0.6	0.6	0.6
	BACHELOR	0.0	0.0	0.0	0.0	0.0	0.0	0.0	0.0	0.0	0.0
	POST GRAD	0.0	0.0	0.0	0.0	0.0	0.0	0.0	0.0	0.0	0.0
	Total		15.3	15.5	15.6	14.9	14.4	14.2	12.8	12.5	10.9
30-39 yrs	NON-AWD	1.7	1.8	2.0	2.4	1.9	2.0	1.8	1.8	1.7	1.3
	SUBJECT ONLY	0.5	0.3	0.4	0.3	0.4	0.5	0.4	0.4	0.3	0.3
	STATEMT	1.4	2.0	2.1	1.9	1.7	1.3	1.1	0.8	0.8	0.7
	CERT I	1.1	0.9	0.8	0.7	0.6	0.6	0.5	0.4	0.4	0.3
	CERT II	2.3	2.5	2.4	2.0	1.9	2.0	1.7	1.3	1.0	0.7
	CERT III	2.5	2.5	2.6	2.2	2.3	2.2	1.9	1.7	1.5	1.1
	SENIOR	0.0	0.0	0.0	0.0	0.0	0.0	0.0	0.0	0.0	0.0
	CERT IV	1.4	1.6	1.7	1.7	1.8	1.7	1.5	1.5	1.3	1.2
	DIPLOMA	0.9	1.0	1.1	0.9	1.1	1.2	1.1	1.2	1.1	0.9
	ADV DIP	0.4	0.3	0.3	0.3	0.3	0.3	0.3	0.4	0.4	0.3
	BACHELOR	0.0	0.0	0.0	0.0	0.0	0.0	0.0	0.0	0.0	0.0
	POST GRAD	0.0	0.0	0.0	0.0	0.0	0.0	0.0	0.0	0.0	0.0
	Total		12.1	12.9	13.5	12.3	12.1	11.8	10.4	9.6	8.6

MEN		% participation										
		SES deciles										
		1 (lowest)	2	3	4	5	6	7	8	9	10 (highest)	
40-49 yrs	NON-AWD	1.4	1.7	1.9	2.1	1.8	1.8	1.8	1.7	1.6	1.1	
	SUBJECT ONLY	0.4	0.3	0.4	0.3	0.4	0.6	0.4	0.4	0.3	0.3	
	STATEMT	1.3	1.8	1.8	1.7	1.6	1.2	1.0	0.8	0.7	0.6	
	CERT I	0.8	0.7	0.7	0.5	0.4	0.5	0.4	0.3	0.3	0.2	
	CERT II	1.7	1.7	1.7	1.4	1.5	1.4	1.3	1.0	0.7	0.5	
	CERT III	1.8	1.8	1.8	1.6	1.6	1.6	1.4	1.3	1.0	0.6	
	SENIOR	0.0	0.0	0.0	0.0	0.0	0.0	0.0	0.0	0.0	0.0	
	CERT IV	1.1	1.3	1.6	1.5	1.5	1.4	1.3	1.2	1.0	0.8	
	DIPLOMA	0.6	0.6	0.8	0.6	0.7	0.8	0.7	0.8	0.7	0.5	
	ADV DIP	0.2	0.2	0.2	0.2	0.2	0.2	0.2	0.2	0.2	0.2	
	BACHELOR	0.0	0.0	0.0	0.0	0.0	0.0	0.0	0.0	0.0	0.0	
	POST GRAD	0.0	0.0	0.0	0.0	0.0	0.0	0.0	0.0	0.0	0.0	
	Total		9.4	10.1	10.8	10.1	9.7	9.6	8.6	7.8	6.6	4.9
50-59 yrs	NON-AWD	1.2	1.4	1.5	1.7	1.6	1.6	1.6	1.5	1.3	1.2	
	SUBJECT ONLY	0.3	0.2	0.4	0.3	0.4	0.5	0.5	0.5	0.4	0.3	
	STATEMT	0.9	1.2	1.3	1.3	1.1	0.9	0.7	0.5	0.5	0.5	
	CERT I	0.5	0.5	0.5	0.4	0.3	0.4	0.3	0.2	0.2	0.2	
	CERT II	1.1	1.1	1.1	1.0	1.0	0.9	0.8	0.7	0.6	0.4	
	CERT III	1.0	1.0	1.0	1.0	1.0	1.0	0.9	0.8	0.7	0.4	
	SENIOR	0.0	0.0	0.0	0.0	0.0	0.0	0.0	0.0	0.0	0.0	
	CERT IV	0.5	0.8	0.8	0.9	0.8	0.9	0.8	0.8	0.6	0.5	
	DIPLOMA	0.2	0.3	0.4	0.3	0.3	0.4	0.3	0.4	0.3	0.2	
	ADV DIP	0.1	0.1	0.1	0.1	0.1	0.1	0.1	0.1	0.1	0.1	
	BACHELOR	0.0	0.0	0.0	0.0	0.0	0.0	0.0	0.0	0.0	0.0	
	POST GRAD	0.0	0.0	0.0	0.0	0.0	0.0	0.0	0.0	0.0	0.0	
	Total		5.9	6.5	7.0	7.0	6.7	6.6	6.0	5.5	4.7	3.8
60-64 yrs	NON-AWD	0.5	0.7	0.8	0.9	0.9	0.8	0.9	0.8	0.9	0.8	
	SUBJECT ONLY	0.3	0.2	0.3	0.3	0.4	0.5	0.5	0.6	0.4	0.4	
	STATEMT	0.5	0.7	0.7	0.8	0.7	0.6	0.4	0.4	0.3	0.3	
	CERT I	0.3	0.3	0.2	0.3	0.2	0.2	0.2	0.2	0.2	0.2	
	CERT II	0.4	0.5	0.5	0.5	0.4	0.5	0.4	0.3	0.4	0.3	
	CERT III	0.4	0.4	0.5	0.4	0.5	0.4	0.4	0.3	0.3	0.2	
	SENIOR	0.0	0.0	0.0	0.0	0.0	0.0	0.0	0.0	0.0	0.0	
	CERT IV	0.2	0.2	0.3	0.3	0.4	0.3	0.3	0.3	0.2	0.3	
	DIPLOMA	0.1	0.1	0.1	0.1	0.1	0.1	0.1	0.1	0.1	0.1	
	ADV DIP	0.0	0.0	0.0	0.0	0.0	0.0	0.0	0.1	0.1	0.0	
	BACHELOR	0.0	0.0	0.0	0.0	0.0	0.0	0.0	0.0	0.0	0.0	
	POST GRAD	0.0	0.0	0.0	0.0	0.0	0.0	0.0	0.0	0.0	0.0	
	Total		2.6	3.0	3.6	3.5	3.6	3.4	3.1	3.0	3.0	2.6
65 yrs & over	NON-AWD	0.2	0.3	0.4	0.4	0.4	0.3	0.4	0.3	0.4	0.4	
	SUBJECT ONLY	0.2	0.1	0.2	0.2	0.2	0.4	0.4	0.4	0.3	0.3	
	STATEMT	0.2	0.2	0.3	0.3	0.2	0.2	0.2	0.1	0.1	0.1	
	CERT I	0.1	0.1	0.1	0.1	0.1	0.1	0.1	0.1	0.1	0.1	
	CERT II	0.1	0.1	0.2	0.1	0.2	0.1	0.1	0.1	0.1	0.1	
	CERT III	0.1	0.1	0.1	0.1	0.1	0.1	0.1	0.1	0.1	0.1	
	SENIOR	0.0	0.0	0.0	0.0	0.0	0.0	0.0	0.0	0.0	0.0	
	CERT IV	0.0	0.0	0.0	0.0	0.1	0.1	0.1	0.1	0.0	0.1	
	DIPLOMA	0.0	0.0	0.0	0.0	0.0	0.0	0.0	0.0	0.0	0.0	
	ADV DIP	0.0	0.0	0.0	0.0	0.0	0.0	0.0	0.0	0.0	0.0	
	BACHELOR	0.0	0.0	0.0	0.0	0.0	0.0	0.0	0.0	0.0	0.0	
	Total		1.0	1.1	1.3	1.2	1.4	1.3	1.3	1.2	1.2	1.3

Figure 4 Per cent participation in VET, women, 15-19 years, Australia, by SES deciles

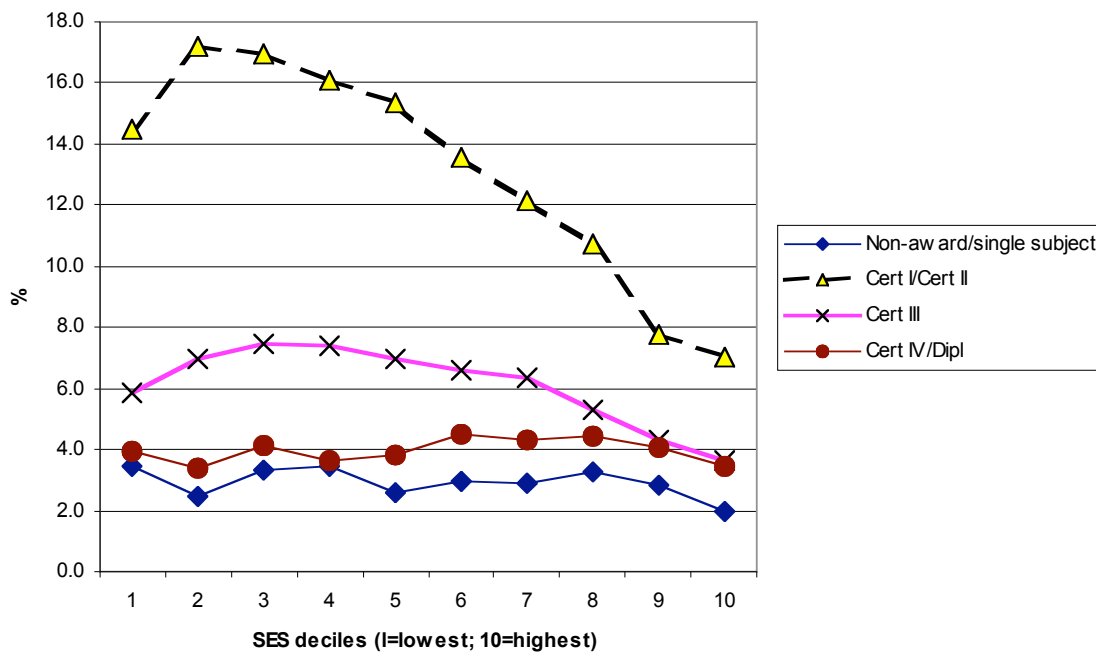


Figure 5 Per cent participation in VET, men, 15-19 years, Australia, by SES deciles

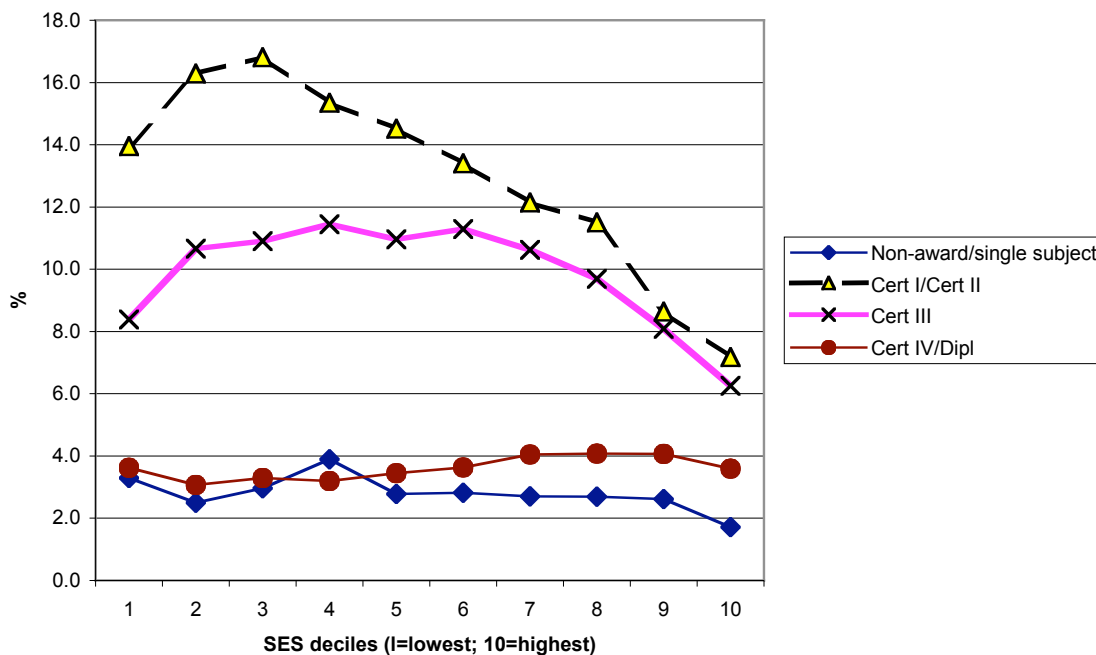


Figure 6 Per cent participation in VET, women, 20-24 years, Australia, by SES deciles

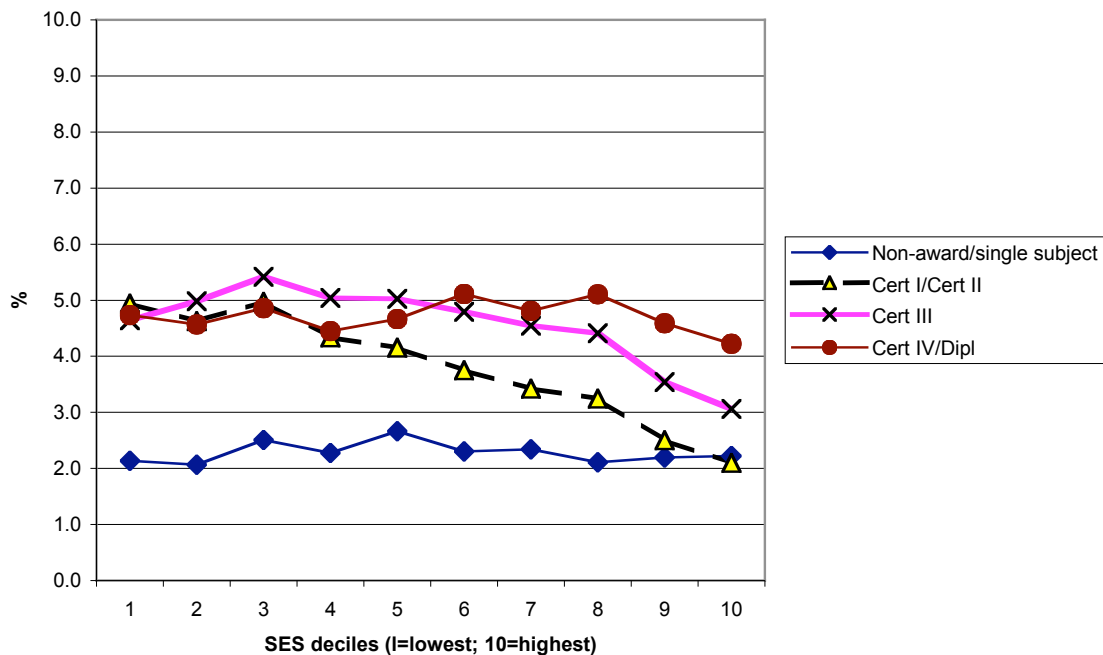


Figure 7 Per cent participation in VET, men, 20-24 years, Australia, by SES deciles

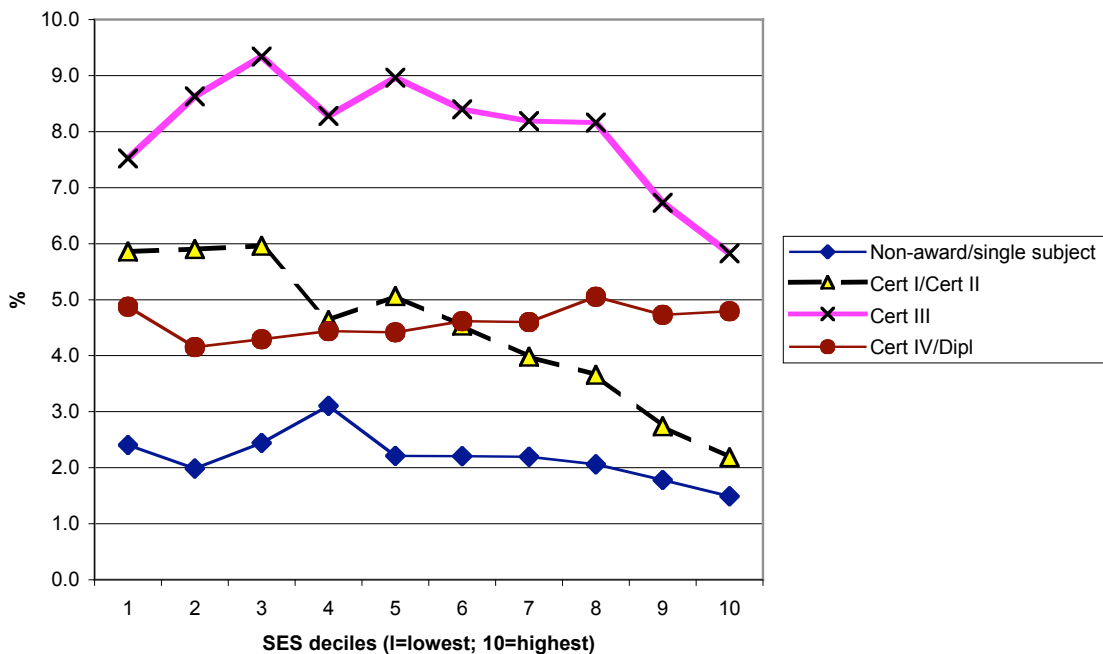


Figure 8 Per cent participation in VET, women, 25-29 years, Australia, by SES deciles

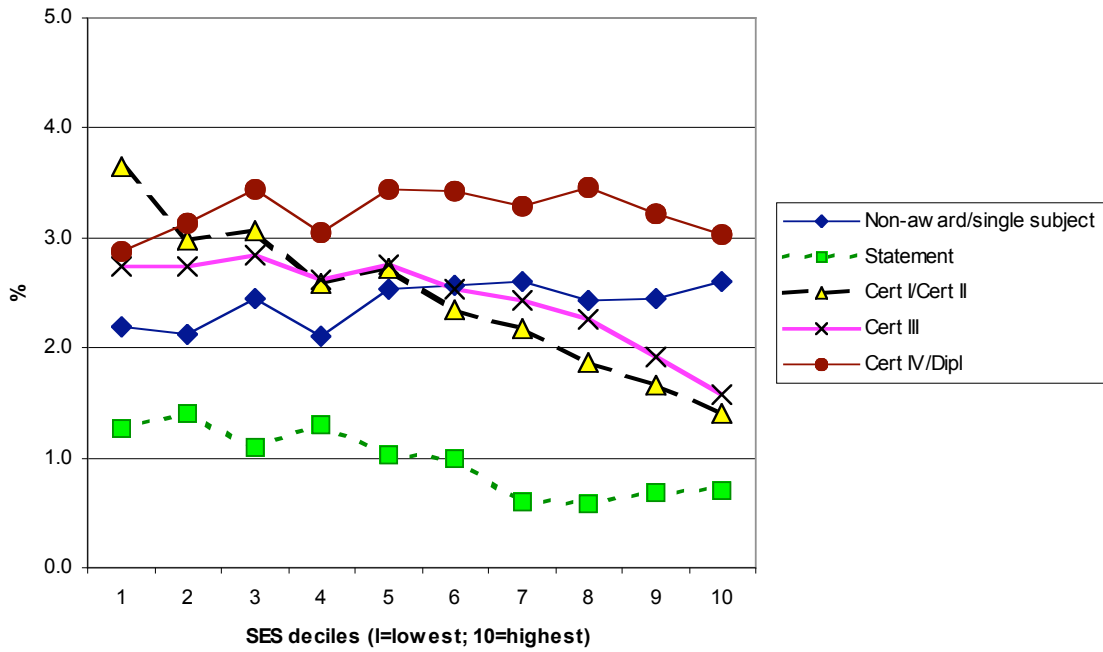


Figure 9 Per cent participation in VET, men, 25-29 years, Australia, by SES deciles

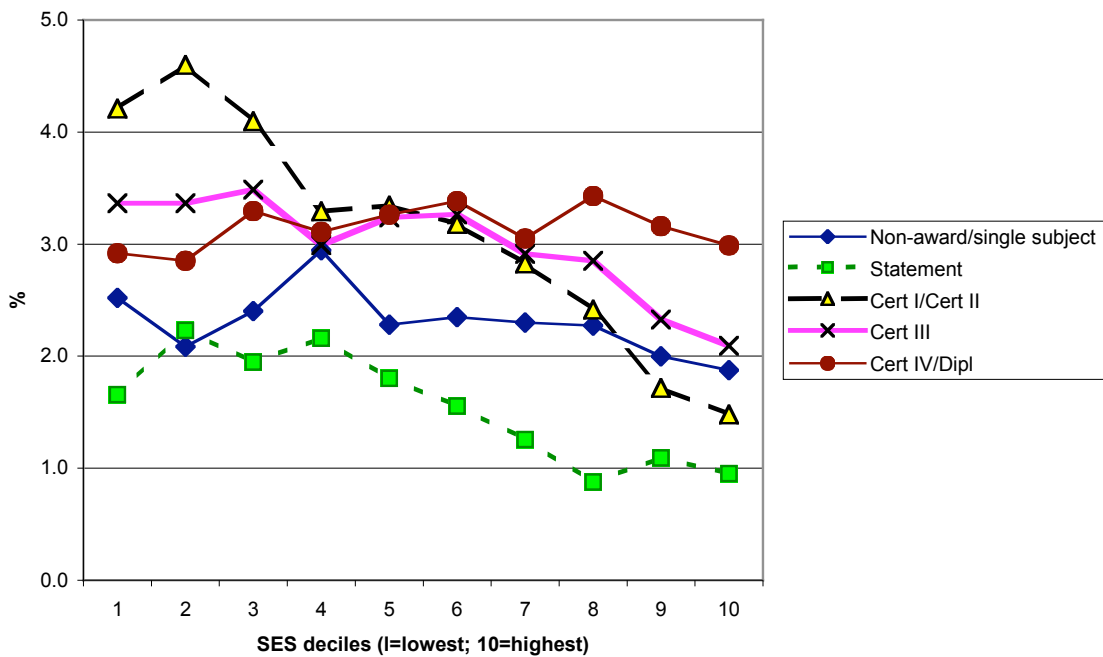


Figure 10 Per cent participation in VET, women, 30-39 years, Australia, by SES deciles

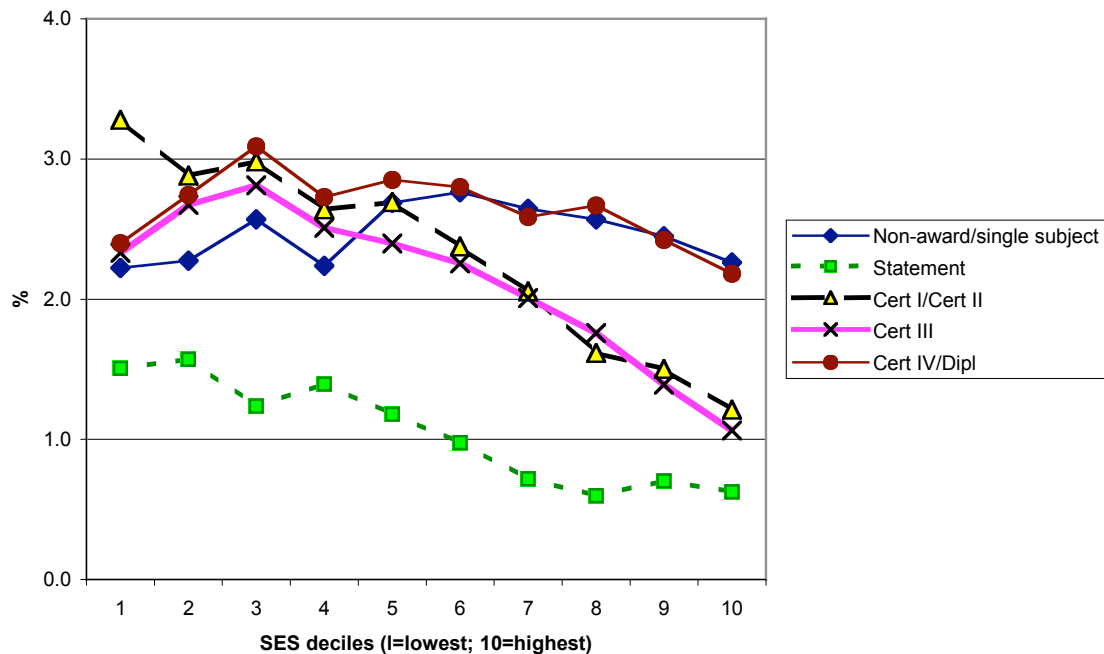


Figure 11 Per cent participation in VET, men, 30-39 years, Australia, by SES deciles

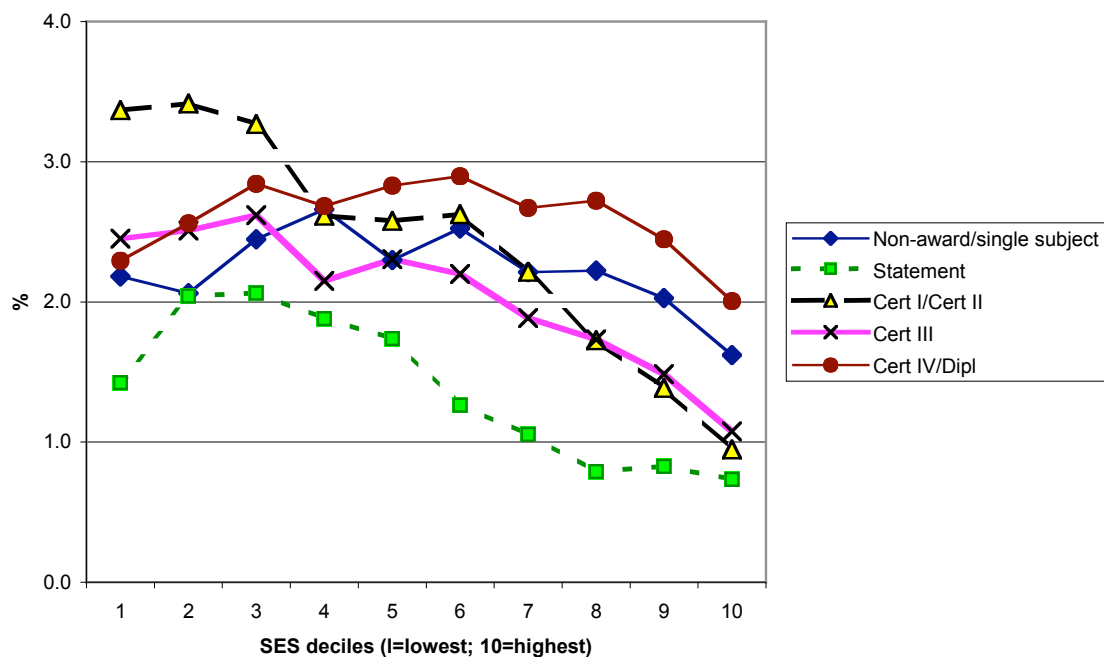


Figure 12 Per cent participation in VET, women, 40-49 years, Australia, by SES deciles

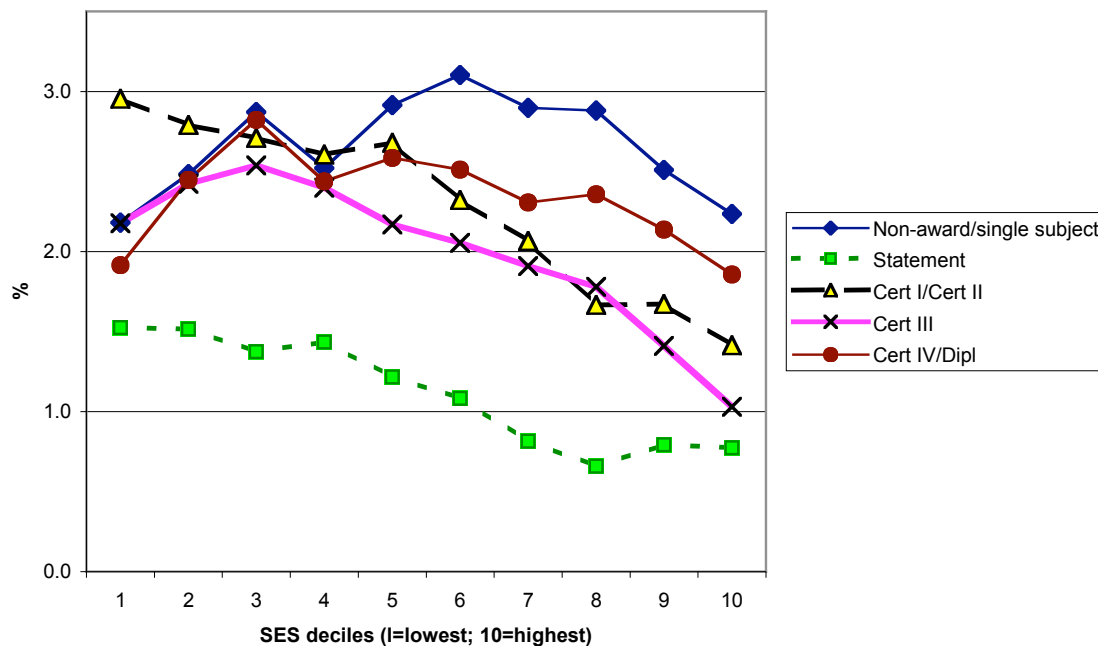


Figure 13 Per cent participation in VET, men, 40-49 years, Australia, by SES deciles

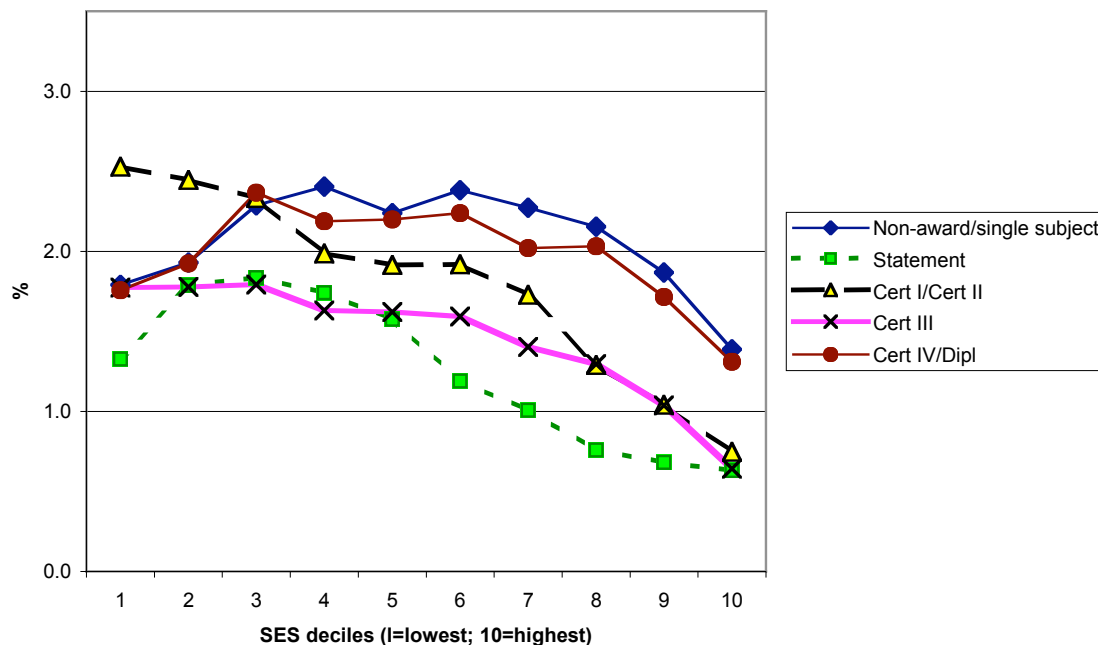


Figure 14 Per cent participation in VET, women, 50-59 years, Australia, by SES deciles

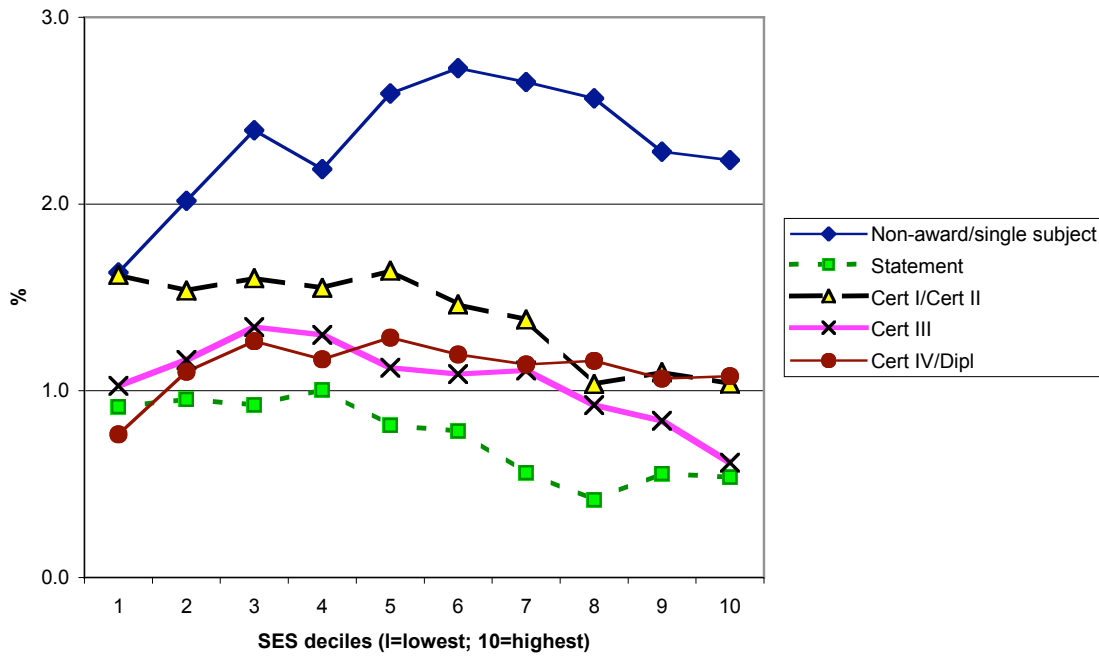
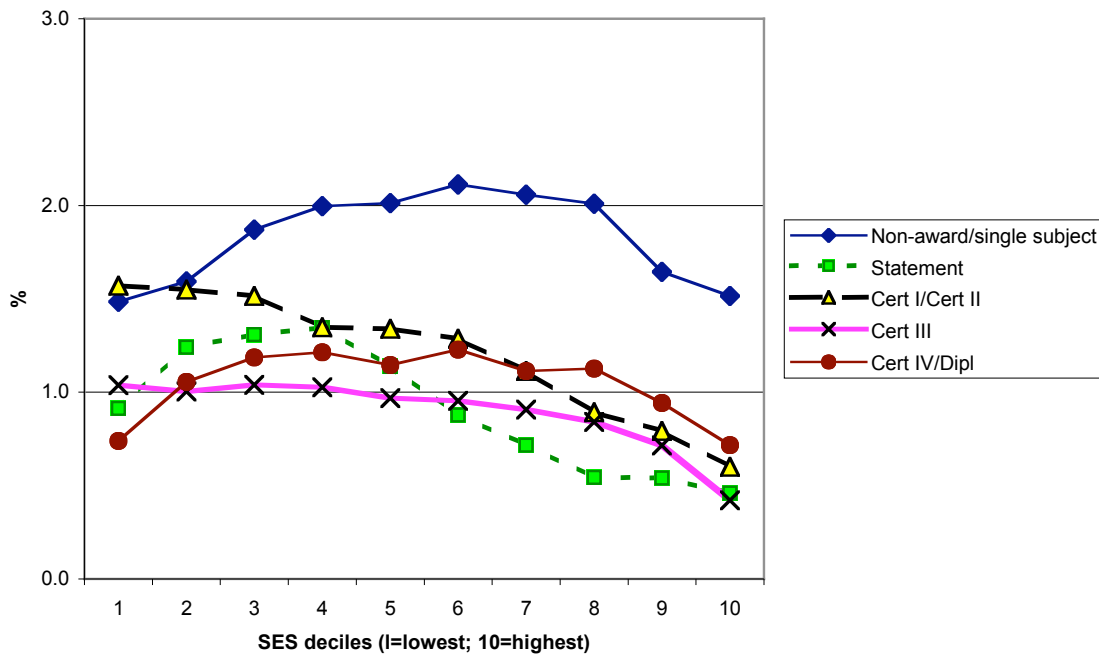


Figure 15 Per cent participation in VET, men, 50-59 years, Australia, by SES deciles



South Australia

VET participation rates across South Australia

Table 7 Enrolments and per cent participation in VET across South Australia, by age groups and gender

age groups	VET (no. enrolments)			% Participation		
	female	male	total	female	male	total
15-19 yrs	16576	18209	34785	32.8	34.6	33.7
20-24	8360	10351	18711	18.0	21.2	19.6
25-29	6373	7269	13642	13.0	14.3	13.7
30-39	12822	13109	25931	11.6	11.7	11.7
40-49	11735	10641	22376	10.4	9.6	10.0
50-59	6190	5702	11892	6.6	6.1	6.3
60-64	1059	1011	2070	3.1	3.0	3.1
65 yrs & over	1357	1045	2402	1.1	1.1	1.1

Figure 16 Per cent participation in VET by age groups and gender: South Australia

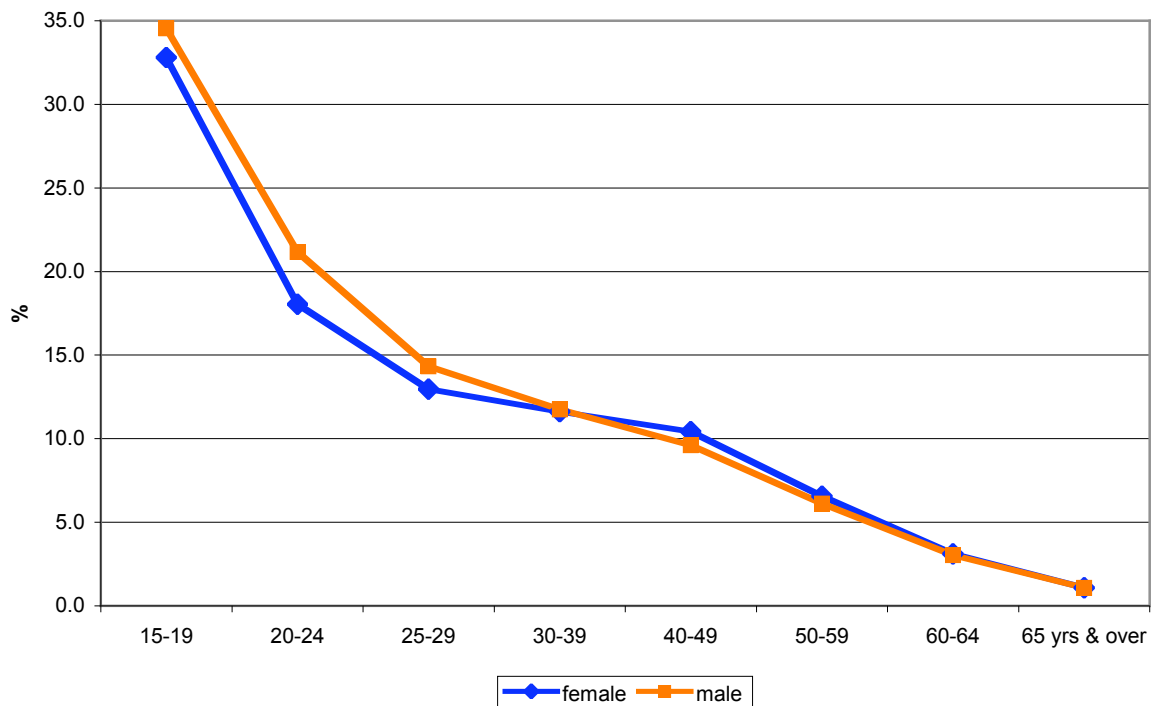


Table 8 Enrolments and per cent participation in VET across South Australia, women by age groups and main qualification

WOMEN

	<i>VET (no. enrolments)</i>							
	<i>15-19 yrs</i>	<i>20-24</i>	<i>25-29</i>	<i>30-39</i>	<i>40-49</i>	<i>50-59</i>	<i>60-64</i>	<i>65 yrs & over</i>
NON-AWD	8230	1653	1699	3682	3720	2354	469	513
SUBJECT ONLY	195	215	341	1103	1025	932	347	679
STATEMT	14	13	17	15	13	8	5	
CERT I	602	243	213	420	465	223	20	26
CERT II	3561	1310	684	1232	954	376	45	47
CERT III	2321	2220	1434	2839	2719	1177	100	42
SENIOR		1		1				
CERT IV	748	1417	1253	2408	1980	784	47	34
DIPLOMA	520	649	440	715	569	212	12	7
ADV DIP	340	530	264	375	254	99	13	8
BACHELOR	45	108	28	32	35	25	1	1
POST GRAD		1			1			
Total	16576	8360	6373	12822	11735	6190	1059	1357

	<i>Percent Participation</i>							
	<i>15-19 yrs</i>	<i>20-24</i>	<i>25-29</i>	<i>30-39</i>	<i>40-49</i>	<i>50-59</i>	<i>60-64</i>	<i>65 yrs & over</i>
NON-AWD	16.3	3.6	3.5	3.3	3.3	2.5	1.4	0.4
SUBJECT ONLY	0.4	0.5	0.7	1.0	0.9	1.0	1.0	0.5
STATEMT	0.0	0.0	0.0	0.0	0.0	0.0	0.0	0.0
CERT I	1.2	0.5	0.4	0.4	0.4	0.2	0.1	0.0
CERT II	7.0	2.8	1.4	1.1	0.8	0.4	0.1	0.0
CERT III	4.6	4.8	2.9	2.6	2.4	1.2	0.3	0.0
SENIOR	0.0	0.0	0.0	0.0	0.0	0.0	0.0	0.0
CERT IV	1.5	3.1	2.5	2.2	1.8	0.8	0.1	0.0
DIPLOMA	1.0	1.4	0.9	0.6	0.5	0.2	0.0	0.0
ADV DIP	0.7	1.1	0.5	0.3	0.2	0.1	0.0	0.0
BACHELOR	0.1	0.2	0.1	0.0	0.0	0.0	0.0	0.0
POST GRAD	0.0	0.0	0.0	0.0	0.0	0.0	0.0	0.0
Total	32.8	18.0	13.0	11.6	10.4	6.6	3.1	1.1

Table 9 Enrolments and per cent participation in VET across South Australia, men by age groups and main qualification

MEN

	<i>VET (no. enrolments)</i>							
	<i>15-19 yrs</i>	<i>20-24</i>	<i>25-29</i>	<i>30-39</i>	<i>40-49</i>	<i>50-59</i>	<i>60-64</i>	<i>65 yrs & over</i>
NON-AWD	7113	1939	1909	4007	3802	2620	544	575
SUBJECT ONLY	159	116	126	296	249	211	106	314
STATEMT	34	31	35	61	54	16	5	
CERT I	1704	403	261	477	350	179	37	22
CERT II	3731	1897	1150	1683	1010	483	66	38
CERT III	3913	3371	1682	2784	2366	1125	131	41
SENIOR		1						
CERT IV	792	1218	1198	2229	1795	718	87	32
DIPLOMA	479	810	536	939	694	242	22	17
ADV DIP	275	514	349	614	312	101	12	5
BACHELOR	9	51	23	19	9	7	1	1
POST GRAD								
Total	18209	10351	7269	13109	10641	5702	1011	1045

	<i>Percent Participation</i>							
	<i>15-19 yrs</i>	<i>20-24</i>	<i>25-29</i>	<i>30-39</i>	<i>40-49</i>	<i>50-59</i>	<i>60-64</i>	<i>65 yrs & over</i>
NON-AWD	13.5	4.0	3.8	3.6	3.4	2.8	1.6	0.6
SUBJECT ONLY	0.3	0.2	0.2	0.3	0.2	0.2	0.3	0.3
STATEMT	0.1	0.1	0.1	0.1	0.0	0.0	0.0	0.0
CERT I	3.2	0.8	0.5	0.4	0.3	0.2	0.1	0.0
CERT II	7.1	3.9	2.3	1.5	0.9	0.5	0.2	0.0
CERT III	7.4	6.9	3.3	2.5	2.1	1.2	0.4	0.0
SENIOR	0.0	0.0	0.0	0.0	0.0	0.0	0.0	0.0
CERT IV	1.5	2.5	2.4	2.0	1.6	0.8	0.3	0.0
DIPLOMA	0.9	1.7	1.1	0.8	0.6	0.3	0.1	0.0
ADV DIP	0.5	1.1	0.7	0.6	0.3	0.1	0.0	0.0
BACHELOR	0.0	0.1	0.0	0.0	0.0	0.0	0.0	0.0
POST GRAD	0.0	0.0	0.0	0.0	0.0	0.0	0.0	0.0
Total	34.6	21.2	14.3	11.7	9.6	6.1	3.0	1.1

Figure 17 Per cent participation in VET, South Australia, women by age groups and main qualification

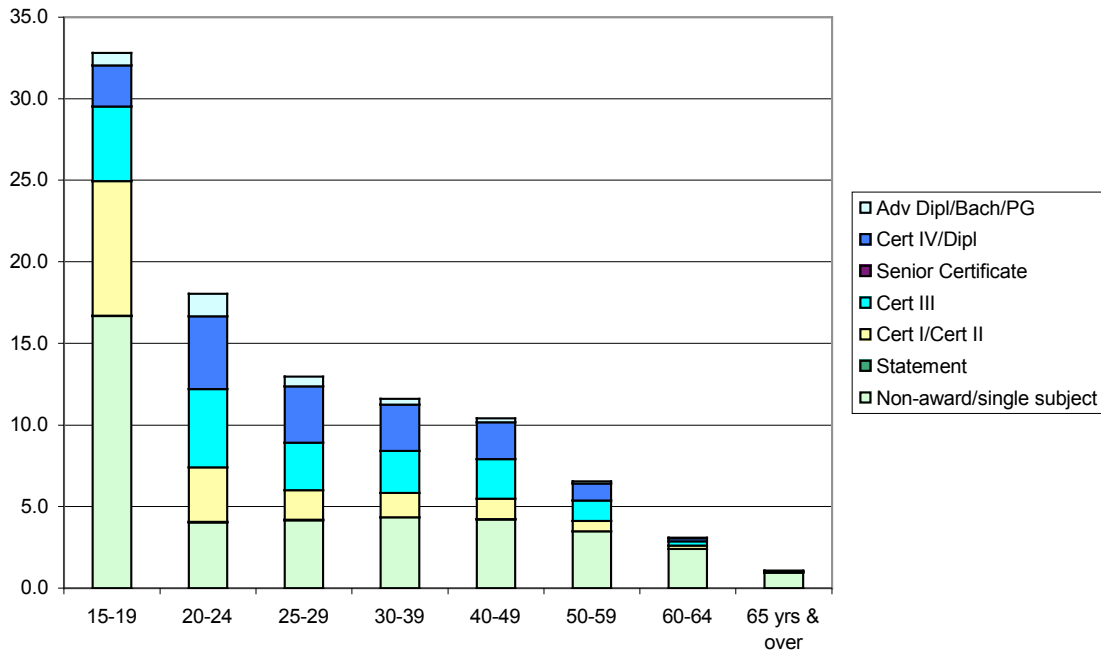


Figure 18 Per cent participation in VET, South Australia, men by age groups and main qualification

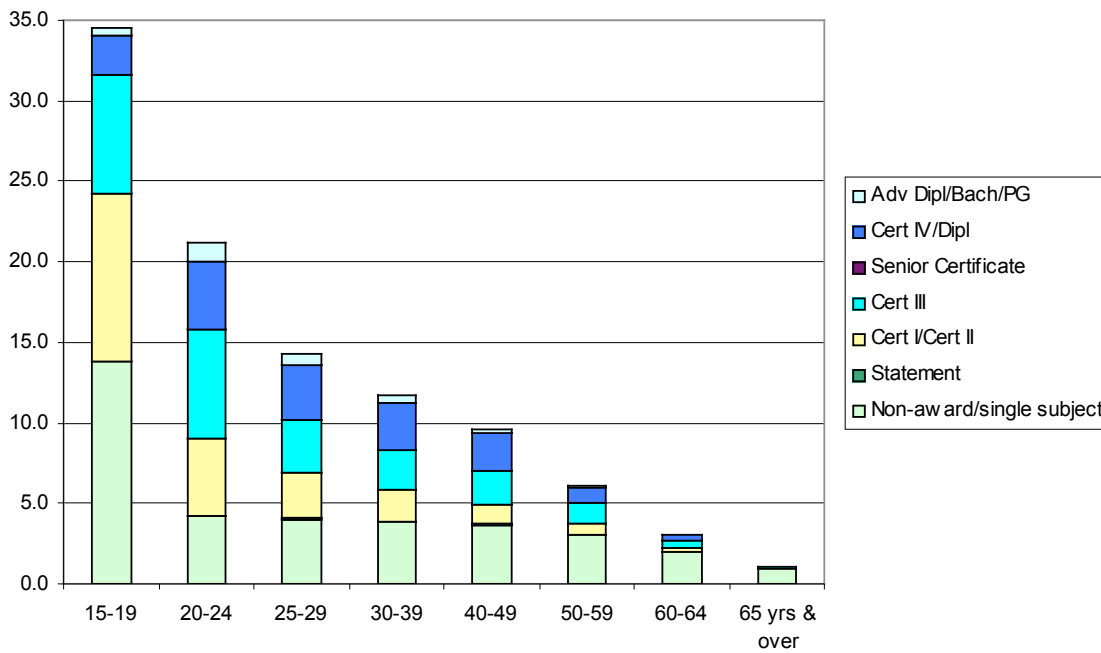


Table 10 Enrolments and per cent participation in VET across South Australia, by gender, age groups and SES quartiles

WOMEN

	VET (no. enrolments)				% Participation			
	SES quartiles				SES quartiles			
	<i>lowest</i>	<i>low</i>	<i>high</i>	<i>highest</i>	<i>lowest</i>	<i>low</i>	<i>high</i>	<i>highest</i>
15-19 yrs	5953	3696	2744	4183	37.3	34.6	32.2	27.2
20-24	3060	1826	1459	2015	21.1	18.2	18.1	14.7
25-29	2481	1414	1111	1367	15.0	12.8	13.0	10.6
30-39	4860	3007	2232	2723	13.7	12.0	11.3	9.1
40-49	4212	2759	2113	2651	12.8	11.2	10.5	7.6
50-59	2037	1499	1132	1522	7.5	7.2	6.4	5.3
60-64	345	271	223	220	3.2	3.4	3.3	2.6
65 yrs & over	427	331	255	344	1.1	1.2	1.0	1.0

MEN

	VET (no. enrolments)				% Participation			
	SES quartiles				SES quartiles			
	<i>lowest</i>	<i>low</i>	<i>high</i>	<i>highest</i>	<i>lowest</i>	<i>low</i>	<i>high</i>	<i>highest</i>
15-19 yrs	6229	4281	3139	4560	36.9	37.2	34.7	29.8
20-24	3595	2310	1845	2601	23.5	21.6	20.6	18.6
25-29	2652	1681	1355	1581	16.1	14.3	14.5	12.0
30-39	4852	3094	2400	2763	13.2	12.2	11.6	9.6
40-49	3781	2532	2070	2258	11.2	10.4	10.2	7.0
50-59	1827	1441	1194	1240	6.8	7.1	6.9	4.3
60-64	320	261	225	205	3.1	3.4	3.3	2.4
65 yrs & over	290	258	243	254	1.0	1.1	1.2	1.1

Table 11 Enrolments and per cent participation in VET across South Australia, women, by age groups, SES quartiles and main qualification

WOMEN		VET (no. enrolments)				% Participation			
		SES quartiles				SES quartiles			
		lowest	low	high	highest	lowest	low	high	highest
15-19 yrs	NON-AWD	2656	1828	1353	2393	16.6	17.1	15.9	15.6
	SUBJECT ONLY	122	34	15	24	0.8	0.3	0.2	0.2
	STATEMT	10	2	1	1	0.1	0.0	0.0	0.0
	CERT I	325	139	84	54	2.0	1.3	1.0	0.4
	CERT II	1519	788	552	702	9.5	7.4	6.5	4.6
	CERT III	835	572	394	520	5.2	5.4	4.6	3.4
	SENIOR					0.0	0.0	0.0	0.0
	CERT IV	244	165	150	189	1.5	1.5	1.8	1.2
	DIPLOMA	166	101	101	152	1.0	0.9	1.2	1.0
	ADV DIP	69	59	86	126	0.4	0.6	1.0	0.8
	BACHELOR	7	8	8	22	0.0	0.1	0.1	0.1
	POST GRAD					0.0	0.0	0.0	0.0
	Total		5953	3696	2744	4183	37.3	34.6	32.2
20-24 yrs	NON-AWD	583	390	314	366	4.0	3.9	3.9	2.7
	SUBJECT ONLY	114	45	17	39	0.8	0.4	0.2	0.3
	STATEMT	6	2	5		0.0	0.0	0.1	0.0
	CERT I	154	44	23	22	1.1	0.4	0.3	0.2
	CERT II	627	263	201	219	4.3	2.6	2.5	1.6
	CERT III	789	563	387	481	5.4	5.6	4.8	3.5
	SENIOR			1		0.0	0.0	0.0	0.0
	CERT IV	452	282	272	411	3.1	2.8	3.4	3.0
	DIPLOMA	229	107	113	200	1.6	1.1	1.4	1.5
	ADV DIP	93	105	103	229	0.6	1.0	1.3	1.7
	BACHELOR	13	25	22	48	0.1	0.2	0.3	0.3
	POST GRAD			1		0.0	0.0	0.0	0.0
	Total		3060	1826	1459	2015	21.1	18.2	18.1
25-29 yrs	NON-AWD	626	387	350	336	3.8	3.5	4.1	2.6
	SUBJECT ONLY	155	94	30	62	0.9	0.8	0.4	0.5
	STATEMT	9	3	2	3	0.1	0.0	0.0	0.0
	CERT I	146	35	13	19	0.9	0.3	0.2	0.1
	CERT II	362	139	83	100	2.2	1.3	1.0	0.8
	CERT III	567	316	251	300	3.4	2.8	2.9	2.3
	SENIOR					0.0	0.0	0.0	0.0
	CERT IV	415	283	234	321	2.5	2.6	2.7	2.5
	DIPLOMA	119	93	101	127	0.7	0.8	1.2	1.0
	ADV DIP	75	58	45	86	0.5	0.5	0.5	0.7
	BACHELOR	7	6	2	13	0.0	0.1	0.0	0.1
	POST GRAD					0.0	0.0	0.0	0.0
	Total		2481	1414	1111	1367	15.0	12.8	13.0
30-39 yrs	NON-AWD	1259	887	735	801	3.5	3.5	3.7	2.7
	SUBJECT ONLY	496	237	124	246	1.4	0.9	0.6	0.8
	STATEMT	8	4	2	1	0.0	0.0	0.0	0.0
	CERT I	227	85	50	58	0.6	0.3	0.3	0.2
	CERT II	648	268	173	143	1.8	1.1	0.9	0.5
	CERT III	1140	690	510	499	3.2	2.8	2.6	1.7
	SENIOR		1			0.0	0.0	0.0	0.0
	CERT IV	713	593	464	638	2.0	2.4	2.4	2.1
	DIPLOMA	259	157	117	182	0.7	0.6	0.6	0.6
	ADV DIP	105	78	54	138	0.3	0.3	0.3	0.5
	BACHELOR	5	7	3	17	0.0	0.0	0.0	0.1
	POST GRAD					0.0	0.0	0.0	0.0
	Total		4860	3007	2232	2723	13.7	12.0	11.3

WOMEN		VET (no. enrolments)				% Participation			
		SES quartiles				SES quartiles			
		lowest	low	high	highest	lowest	low	high	highest
40-49 yrs	NON-AWD	1214	923	750	833	3.7	3.7	3.7	2.4
	SUBJECT ONLY	436	236	109	244	1.3	1.0	0.5	0.7
	STATEMT	4	2	3	4	0.0	0.0	0.0	0.0
	CERT I	205	121	68	71	0.6	0.5	0.3	0.2
	CERT II	439	226	147	142	1.3	0.9	0.7	0.4
	CERT III	1075	648	493	503	3.3	2.6	2.5	1.4
	SENIOR					0.0	0.0	0.0	0.0
	CERT IV	597	415	390	578	1.8	1.7	1.9	1.7
	DIPLOMA	180	118	105	166	0.5	0.5	0.5	0.5
	ADV DIP	57	57	41	99	0.2	0.2	0.2	0.3
	BACHELOR	5	13	7	10	0.0	0.1	0.0	0.0
	POST GRAD				1	0.0	0.0	0.0	0.0
Total		4212	2759	2113	2651	12.8	11.2	10.5	7.6
50-59 yrs	NON-AWD	709	592	497	556	2.6	2.8	2.8	1.9
	SUBJECT ONLY	368	223	106	235	1.3	1.1	0.6	0.8
	STATEMT	5	1	1	1	0.0	0.0	0.0	0.0
	CERT I	92	56	39	36	0.3	0.3	0.2	0.1
	CERT II	163	69	78	66	0.6	0.3	0.4	0.2
	CERT III	398	307	216	256	1.5	1.5	1.2	0.9
	SENIOR					0.0	0.0	0.0	0.0
	CERT IV	190	185	146	263	0.7	0.9	0.8	0.9
	DIPLOMA	86	33	28	65	0.3	0.2	0.2	0.2
	ADV DIP	25	24	15	35	0.1	0.1	0.1	0.1
	BACHELOR	1	9	6	9	0.0	0.0	0.0	0.0
	POST GRAD					0.0	0.0	0.0	0.0
Total		2037	1499	1132	1522	7.5	7.2	6.4	5.3
60-64 yrs	NON-AWD	151	108	123	87	1.4	1.4	1.8	1.0
	SUBJECT ONLY	115	96	51	85	1.1	1.2	0.8	1.0
	STATEMT	4	1			0.0	0.0	0.0	0.0
	CERT I	4	7	6	3	0.0	0.1	0.1	0.0
	CERT II	20	9	12	4	0.2	0.1	0.2	0.0
	CERT III	37	30	18	15	0.3	0.4	0.3	0.2
	SENIOR					0.0	0.0	0.0	0.0
	CERT IV	7	13	10	17	0.1	0.2	0.2	0.2
	DIPLOMA	5	3		4	0.0	0.0	0.0	0.0
	ADV DIP	2	4	2	5	0.0	0.1	0.0	0.1
	BACHELOR			1		0.0	0.0	0.0	0.0
	POST GRAD					0.0	0.0	0.0	0.0
Total		345	271	223	220	3.2	3.4	3.3	2.6
65 yrs & over	NON-AWD	162	119	119	113	0.4	0.4	0.5	0.3
	SUBJECT ONLY	206	173	103	197	0.5	0.6	0.4	0.6
	STATEMT					0.0	0.0	0.0	0.0
	CERT I	13	6	4	3	0.0	0.0	0.0	0.0
	CERT II	15	8	17	7	0.0	0.0	0.1	0.0
	CERT III	16	16	7	3	0.0	0.1	0.0	0.0
	SENIOR					0.0	0.0	0.0	0.0
	CERT IV	11	7	2	14	0.0	0.0	0.0	0.0
	DIPLOMA	4		2	1	0.0	0.0	0.0	0.0
	ADV DIP		2	1	5	0.0	0.0	0.0	0.0
	BACHELOR				1	0.0	0.0	0.0	0.0
	Total		427	331	255	344	1.1	1.2	1.0

Table 12 Enrolments and per cent participation in VET across South Australia, men, by age groups, SES quartiles and main qualification

MEN		VET (no. enrolments)				% Participation			
		SES quartiles				SES quartiles			
		lowest	low	high	highest	lowest	low	high	highest
15-19 yrs	NON-AWD	2223	1678	1170	2042	13.2	14.6	13.0	13.3
	SUBJECT ONLY	85	38	24	12	0.5	0.3	0.3	0.1
	STATEMT	19	5	4	6	0.1	0.0	0.0	0.0
	CERT I	773	384	243	304	4.6	3.3	2.7	2.0
	CERT II	1476	855	652	748	8.7	7.4	7.2	4.9
	CERT III	1272	982	714	945	7.5	8.5	7.9	6.2
	SENIOR					0.0	0.0	0.0	0.0
	CERT IV	200	187	158	247	1.2	1.6	1.7	1.6
	DIPLOMA	122	92	107	158	0.7	0.8	1.2	1.0
	ADV DIP	58	59	63	95	0.3	0.5	0.7	0.6
	BACHELOR	1	1	4	3	0.0	0.0	0.0	0.0
	POST GRAD					0.0	0.0	0.0	0.0
	Total	6229	4281	3139	4560	36.9	37.2	34.7	29.8
20-24 yrs	NON-AWD	659	426	391	463	4.3	4.0	4.4	3.3
	SUBJECT ONLY	61	27	13	15	0.4	0.3	0.1	0.1
	STATEMT	13	8	2	8	0.1	0.1	0.0	0.1
	CERT I	223	65	50	65	1.5	0.6	0.6	0.5
	CERT II	853	437	267	340	5.6	4.1	3.0	2.4
	CERT III	1102	812	609	848	7.2	7.6	6.8	6.1
	SENIOR		1			0.0	0.0	0.0	0.0
	CERT IV	311	276	243	388	2.0	2.6	2.7	2.8
	DIPLOMA	231	168	146	265	1.5	1.6	1.6	1.9
	ADV DIP	124	83	118	189	0.8	0.8	1.3	1.4
	BACHELOR	18	7	6	20	0.1	0.1	0.1	0.1
	POST GRAD					0.0	0.0	0.0	0.0
	Total	3595	2310	1845	2601	23.5	21.6	20.6	18.6
25-29 yrs	NON-AWD	641	418	436	414	3.9	3.6	4.7	3.2
	SUBJECT ONLY	70	16	17	23	0.4	0.1	0.2	0.2
	STATEMT	13	10	5	7	0.1	0.1	0.1	0.1
	CERT I	151	47	37	26	0.9	0.4	0.4	0.2
	CERT II	526	250	178	196	3.2	2.1	1.9	1.5
	CERT III	645	425	281	331	3.9	3.6	3.0	2.5
	SENIOR					0.0	0.0	0.0	0.0
	CERT IV	347	315	218	318	2.1	2.7	2.3	2.4
	DIPLOMA	154	119	109	154	0.9	1.0	1.2	1.2
	ADV DIP	92	80	71	106	0.6	0.7	0.8	0.8
	BACHELOR	13	1	3	6	0.1	0.0	0.0	0.0
	POST GRAD					0.0	0.0	0.0	0.0
	Total	2652	1681	1355	1581	16.1	14.3	14.5	12.0
30-39 yrs	NON-AWD	1382	907	889	829	3.8	3.6	4.3	2.9
	SUBJECT ONLY	145	60	35	56	0.4	0.2	0.2	0.2
	STATEMT	24	17	9	11	0.1	0.1	0.0	0.0
	CERT I	248	103	57	69	0.7	0.4	0.3	0.2
	CERT II	785	407	247	244	2.1	1.6	1.2	0.8
	CERT III	1127	713	460	484	3.1	2.8	2.2	1.7
	SENIOR					0.0	0.0	0.0	0.0
	CERT IV	653	552	428	596	1.8	2.2	2.1	2.1
	DIPLOMA	306	214	156	263	0.8	0.8	0.8	0.9
	ADV DIP	176	116	119	203	0.5	0.5	0.6	0.7
	BACHELOR	6	5		8	0.0	0.0	0.0	0.0
	POST GRAD					0.0	0.0	0.0	0.0
	Total	4852	3094	2400	2763	13.2	12.2	11.6	9.6

MEN		VET (no. enrolments)				% Participation			
		SES quartiles				SES quartiles			
		lowest	low	high	highest	lowest	low	high	highest
40-49 yrs	NON-AWD	1257	871	896	778	3.7	3.6	4.4	2.4
	SUBJECT ONLY	122	43	47	37	0.4	0.2	0.2	0.1
	STATEMT	15	15	9	15	0.0	0.1	0.0	0.0
	CERT I	175	82	43	50	0.5	0.3	0.2	0.2
	CERT II	446	237	162	165	1.3	1.0	0.8	0.5
	CERT III	893	604	430	439	2.7	2.5	2.1	1.4
	SENIOR					0.0	0.0	0.0	0.0
	CERT IV	530	438	336	491	1.6	1.8	1.7	1.5
	DIPLOMA	224	184	101	185	0.7	0.8	0.5	0.6
	ADV DIP	117	53	45	97	0.3	0.2	0.2	0.3
	BACHELOR	2	5	1	1	0.0	0.0	0.0	0.0
	POST GRAD					0.0	0.0	0.0	0.0
	Total		3781	2532	2070	2258	11.2	10.4	10.2
50-59 yrs	NON-AWD	759	661	616	584	2.8	3.3	3.5	2.0
	SUBJECT ONLY	101	47	26	37	0.4	0.2	0.1	0.1
	STATEMT	5	3	3	5	0.0	0.0	0.0	0.0
	CERT I	81	42	26	30	0.3	0.2	0.1	0.1
	CERT II	176	130	100	77	0.7	0.6	0.6	0.3
	CERT III	399	276	225	225	1.5	1.4	1.3	0.8
	SENIOR	200	198	134	186	0.7	1.0	0.8	0.7
	CERT IV					0.0	0.0	0.0	0.0
	DIPLOMA	80	57	45	60	0.3	0.3	0.3	0.2
	ADV DIP	24	24	18	35	0.1	0.1	0.1	0.1
	BACHELOR	2	3	1	1	0.0	0.0	0.0	0.0
	POST GRAD					0.0	0.0	0.0	0.0
	Total		1827	1441	1194	1240	6.8	7.1	6.9
60-64 yrs	NON-AWD	150	137	135	122	1.4	1.8	2.0	1.4
	SUBJECT ONLY	35	29	18	24	0.3	0.4	0.3	0.3
	STATEMT	1		3	1	0.0	0.0	0.0	0.0
	CERT I	13	12	7	5	0.1	0.2	0.1	0.1
	CERT II	30	12	10	14	0.3	0.2	0.1	0.2
	CERT III	51	35	26	19	0.5	0.5	0.4	0.2
	SENIOR					0.0	0.0	0.0	0.0
	CERT IV	25	29	19	14	0.2	0.4	0.3	0.2
	DIPLOMA	12	4	5	1	0.1	0.1	0.1	0.0
	ADV DIP	2	3	2	5	0.0	0.0	0.0	0.1
	BACHELOR	1				0.0	0.0	0.0	0.0
	POST GRAD					0.0	0.0	0.0	0.0
	Total		320	261	225	205	3.1	3.4	3.3
65 yrs & over	NON-AWD	154	141	148	132	0.5	0.6	0.8	0.5
	SUBJECT ONLY	91	70	65	88	0.3	0.3	0.3	0.4
	STATEMT					0.0	0.0	0.0	0.0
	CERT I	14	2	3	3	0.0	0.0	0.0	0.0
	CERT II	12	11	10	5	0.0	0.0	0.1	0.0
	CERT III	8	18	6	9	0.0	0.1	0.0	0.0
	SENIOR					0.0	0.0	0.0	0.0
	CERT IV	6	10	7	9	0.0	0.0	0.0	0.0
	DIPLOMA	5	6	1	5	0.0	0.0	0.0	0.0
	ADV DIP			2	3	0.0	0.0	0.0	0.0
	BACHELOR			1		0.0	0.0	0.0	0.0
	POST GRAD					0.0	0.0	0.0	0.0
	Total		290	258	243	254	1.0	1.1	1.2

Figure 19 Per cent participation in VET, women, 15-19 years, South Australia

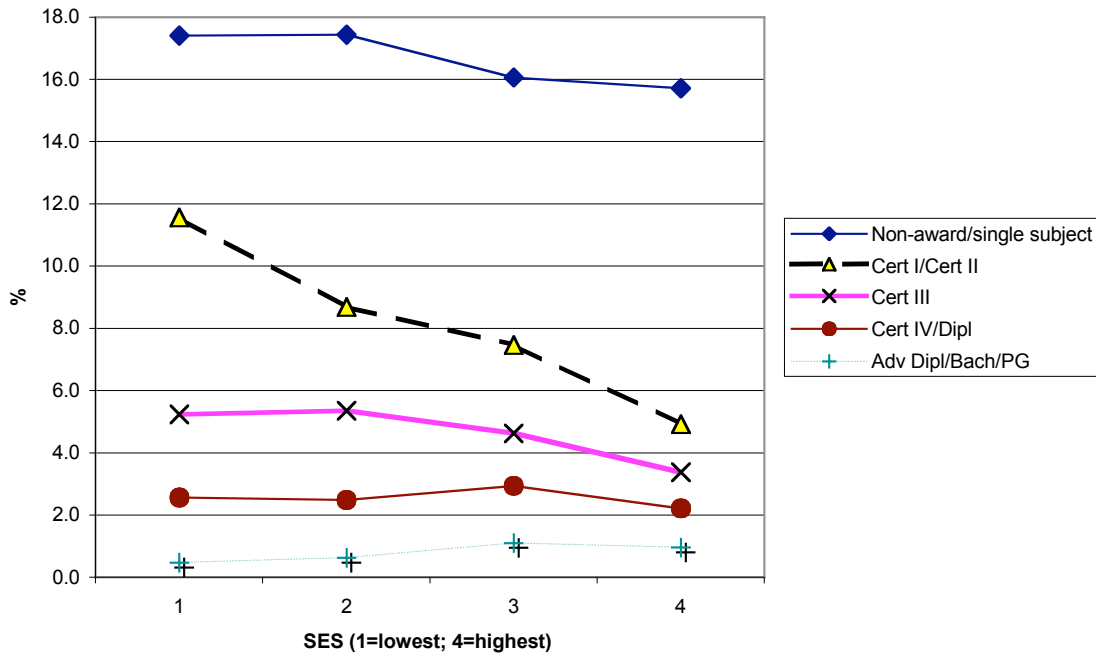


Figure 20 Per cent participation in VET, men, 15-19 years, South Australia

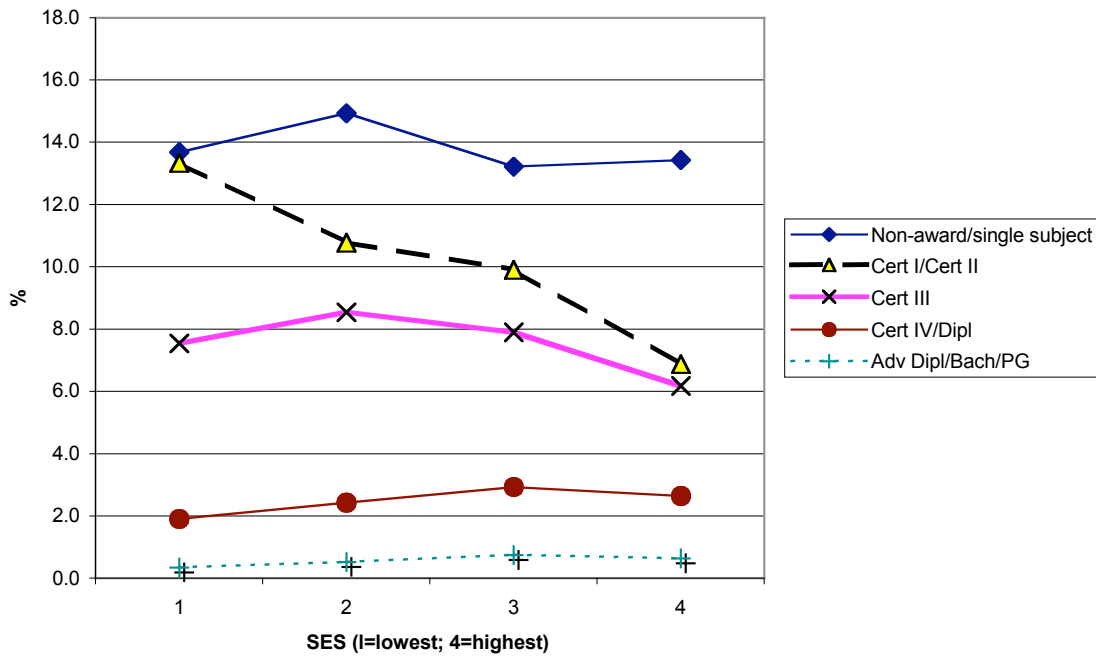


Figure 21 Per cent participation in VET, women, 20-24 years, South Australia

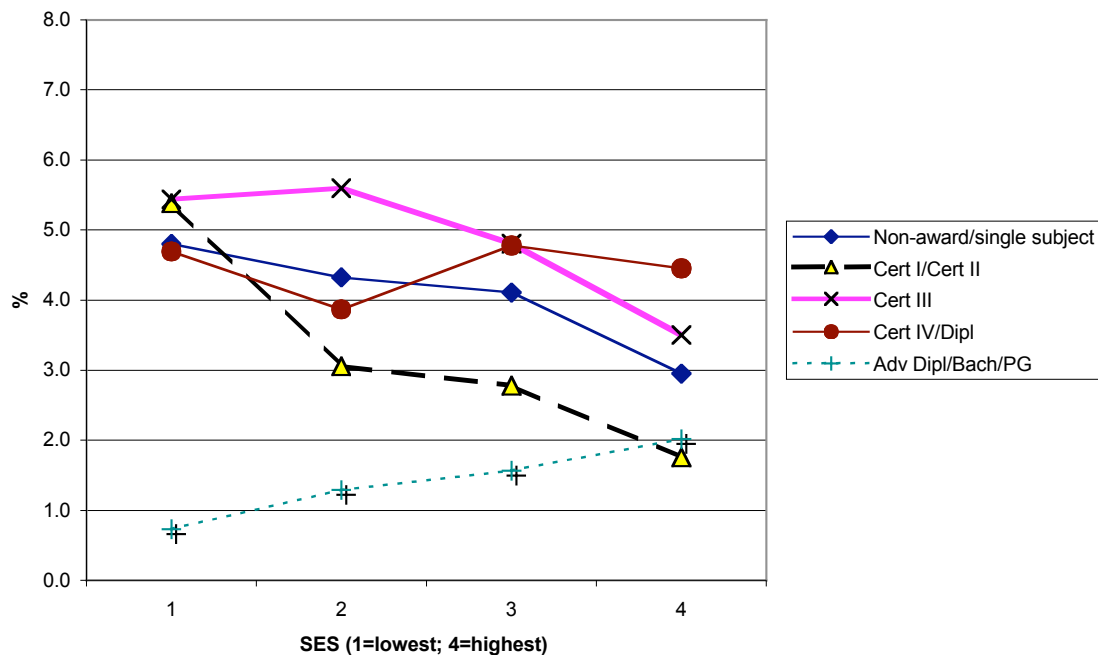


Figure 22 Per cent participation in VET, men, 20-24 years, South Australia

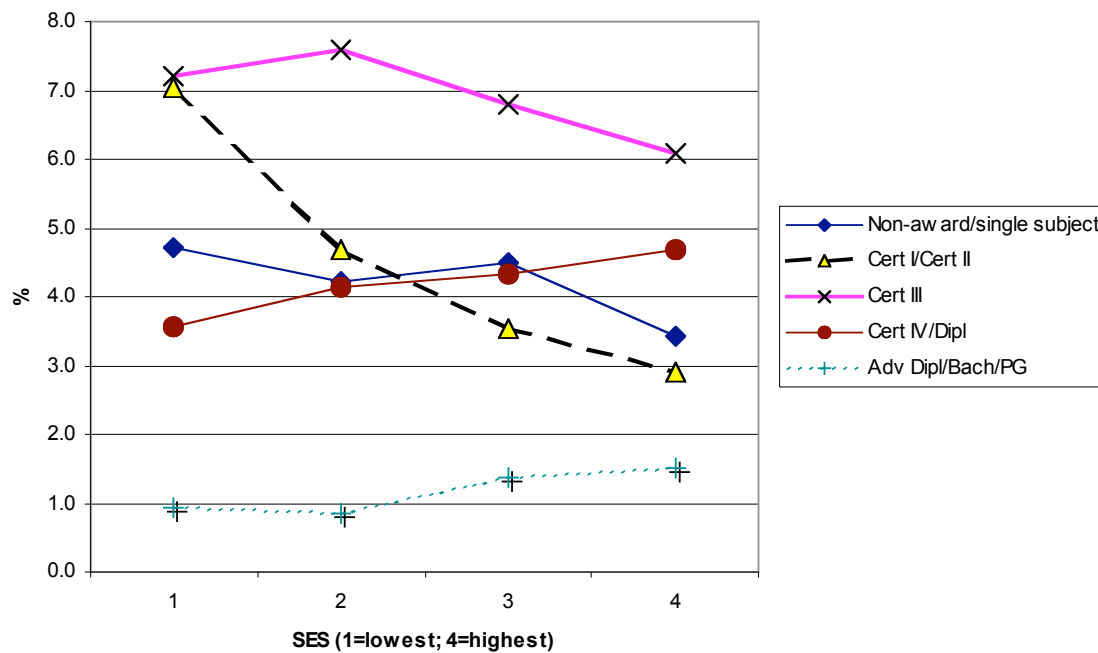


Figure 23 Per cent participation in VET, women, 25-29 years, South Australia

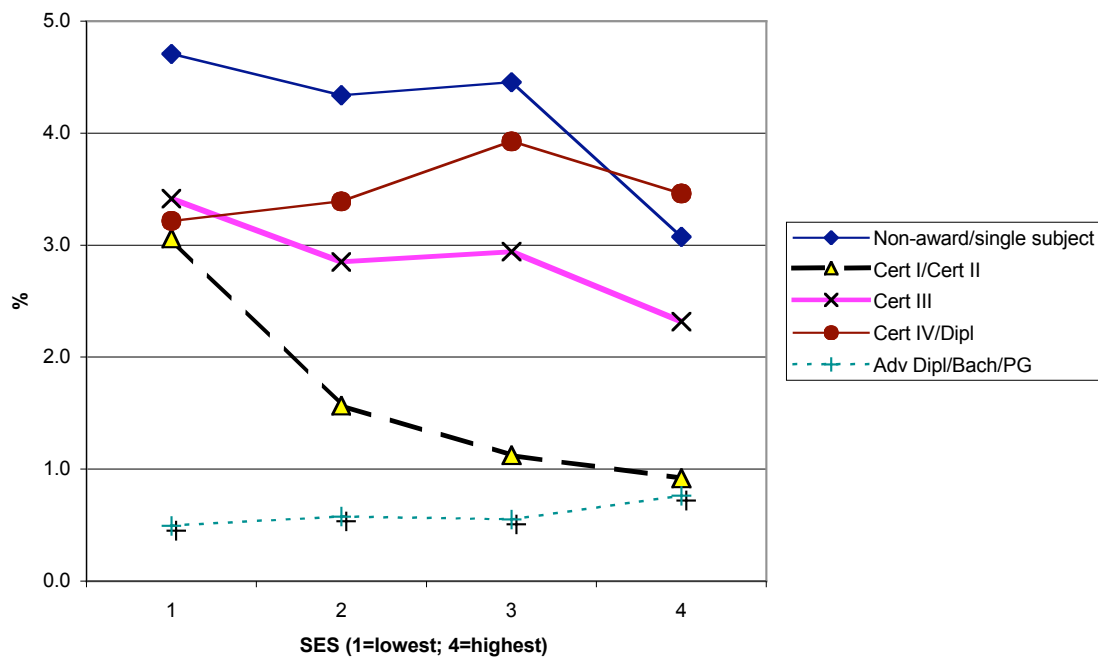


Figure 24 Per cent participation in VET, men, 25-29 years, South Australia

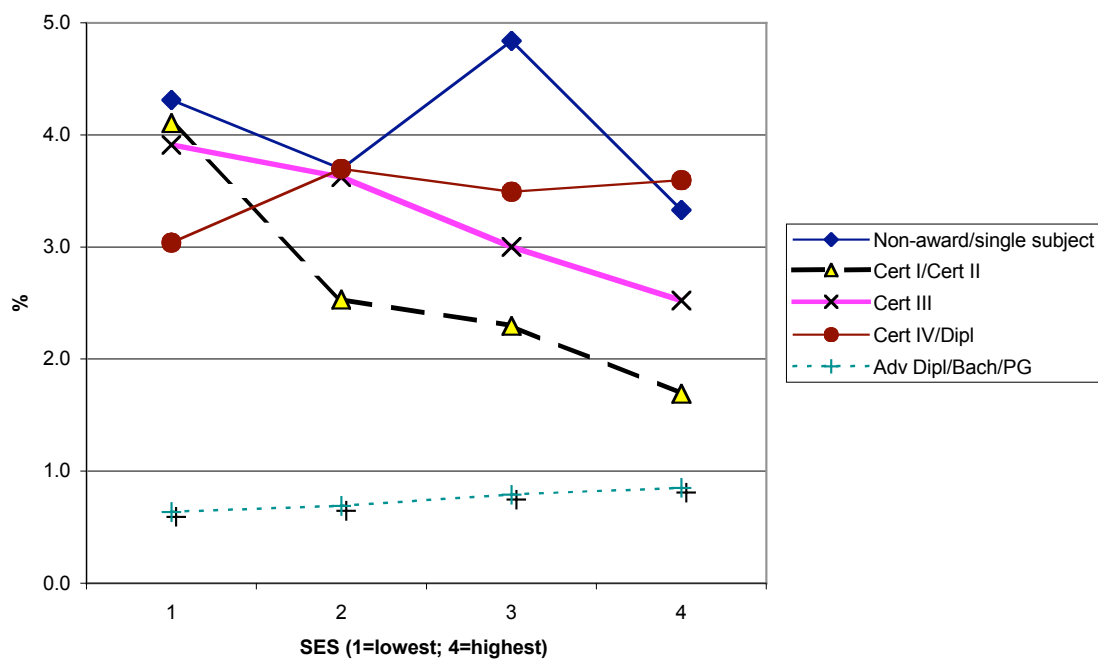


Figure 25 Per cent participation in VET, women, 30-39 years, South Australia

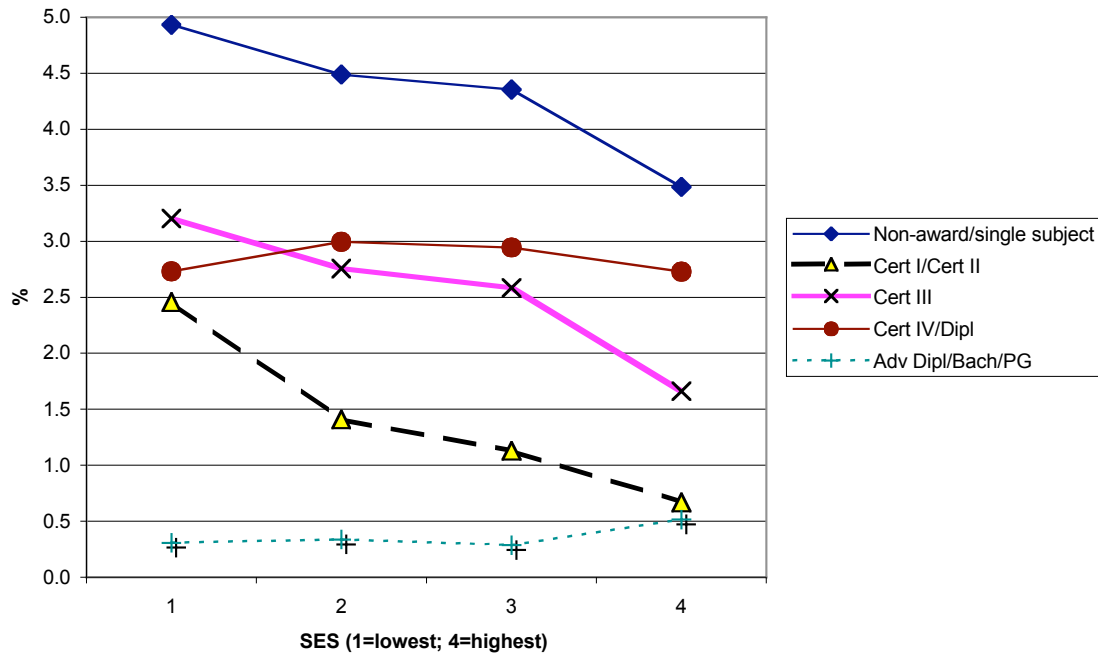


Figure 26 Per cent participation in VET, men, 30-39 years, South Australia

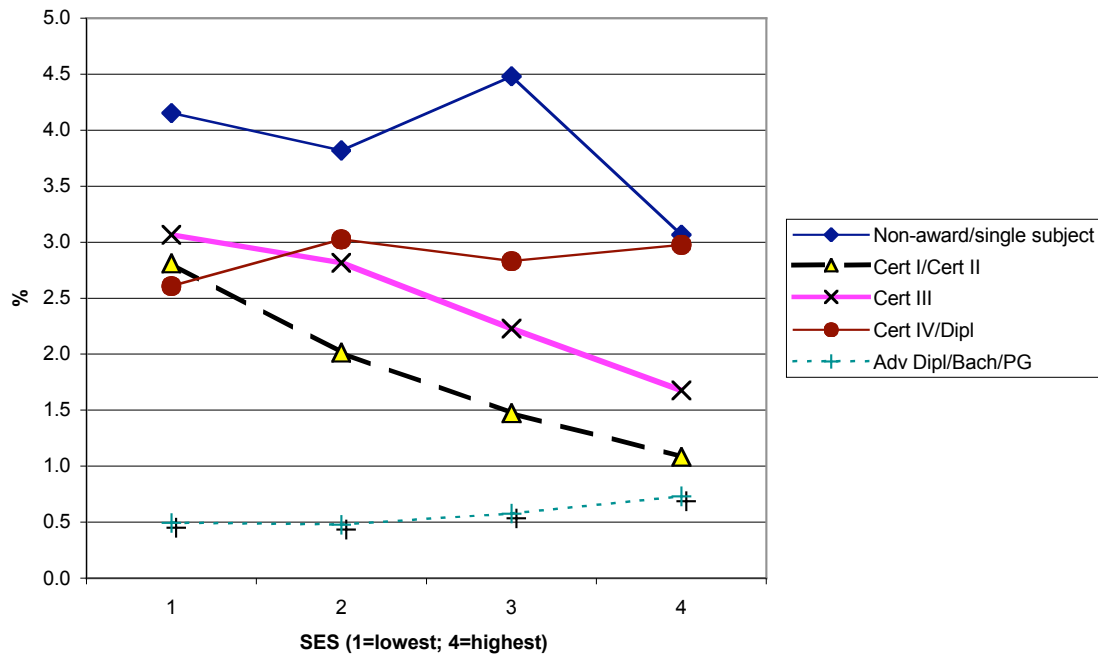


Figure 27 Per cent participation in VET, women, 40-49 years, South Australia

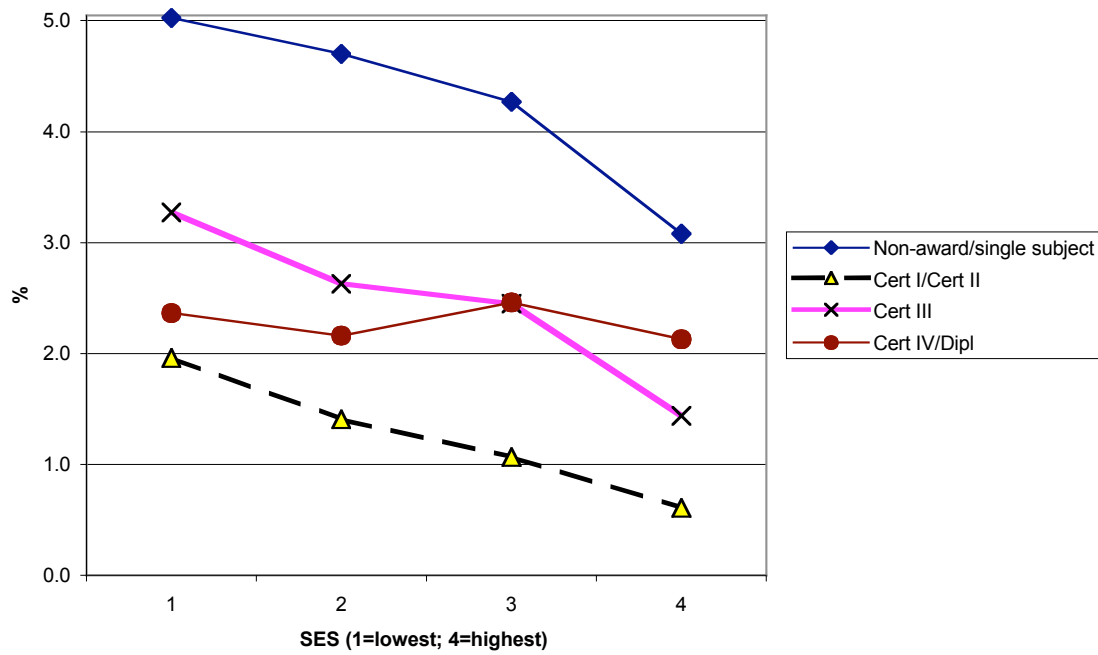


Figure 28 Per cent participation in VET, men, 40-49 years, South Australia

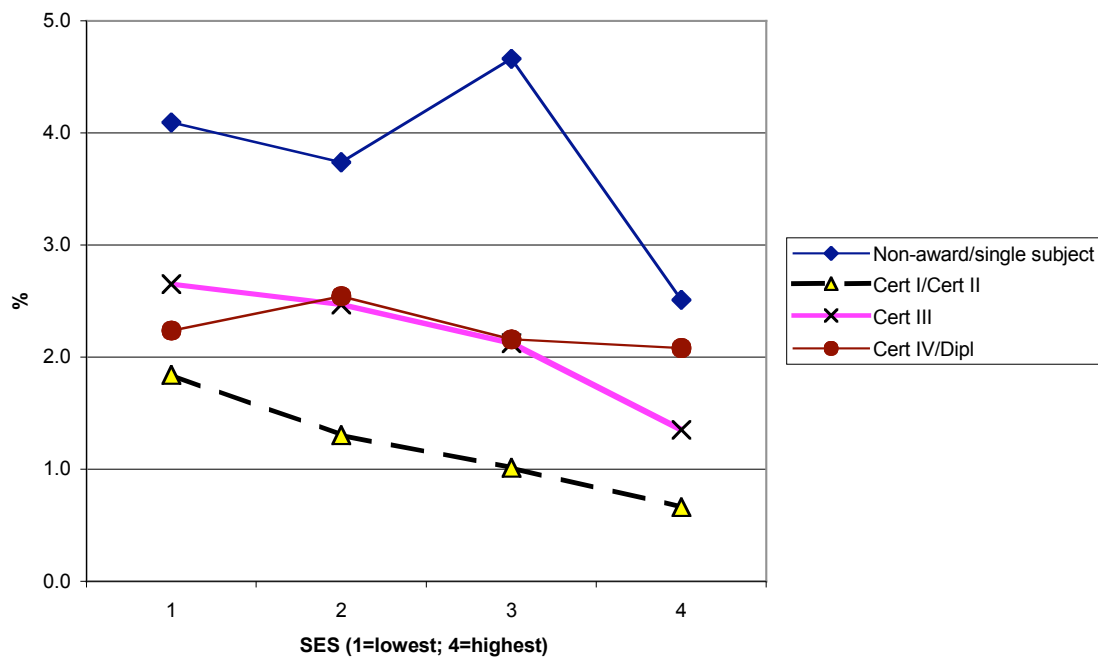


Figure 29 Per cent participation in VET, women, 50-59 years, South Australia

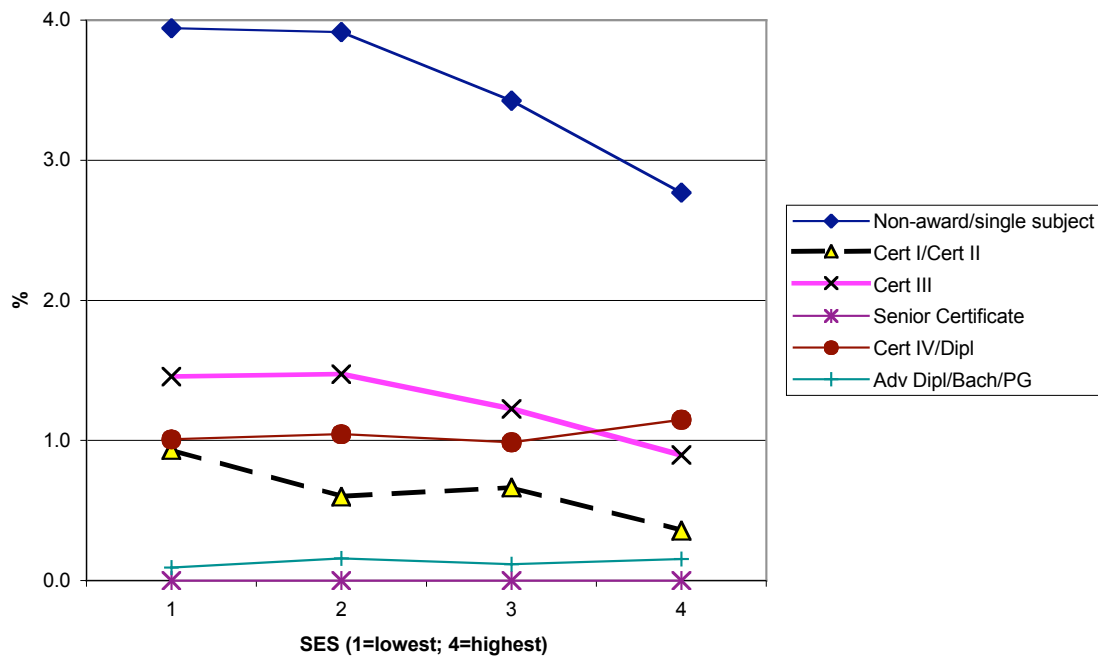
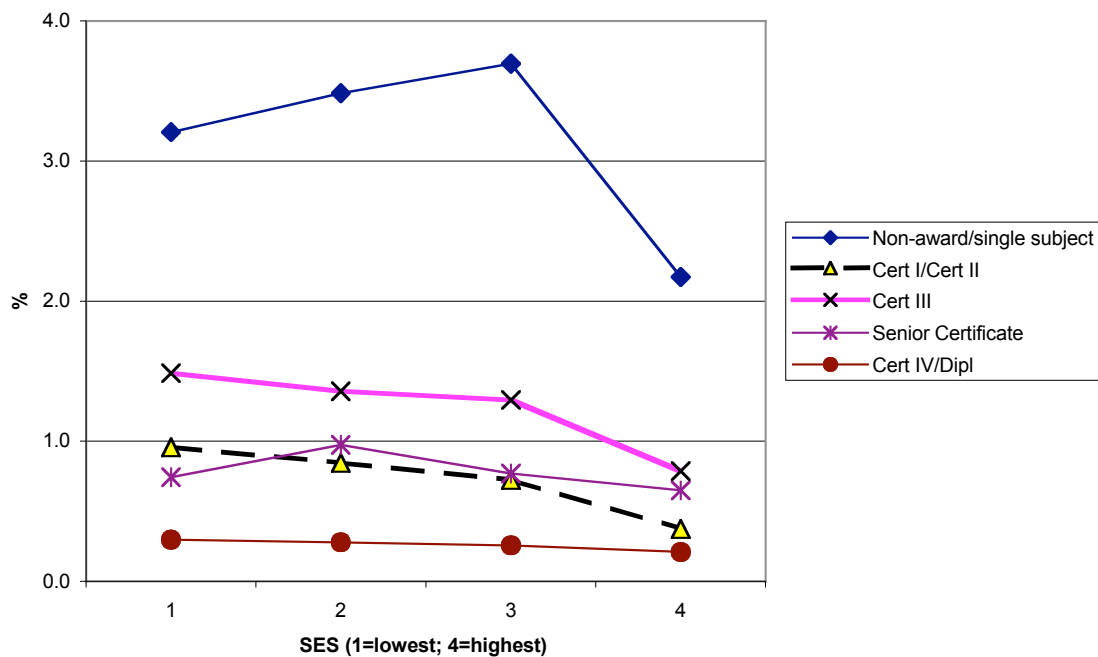


Figure 30 Per cent participation in VET, women, 50-59 years, South Australia



VET participation rates across Queensland

Table 13 Enrolments and per cent participation in VET across Queensland, by age groups and gender

age groups	VET (no. enrolments)			% Participation		
	female	male	total	female	male	total
15-19	39932	46282	86214	31.1	34.6	32.9
20-24	19511	26077	45588	15.9	21.0	18.5
25-29	15482	17287	32769	11.7	13.3	12.5
30-39	29539	28970	58509	10.7	10.9	10.8
40-49	27427	21642	49069	10.3	8.3	9.3
50-59	13953	12057	26010	6.5	5.4	5.9
60-64	1903	2166	4069	2.6	2.8	2.7
65 yrs & over	1624	1565	3189	0.7	0.8	0.8

Figure 31 Per cent participation in VET by age groups and gender: Queensland

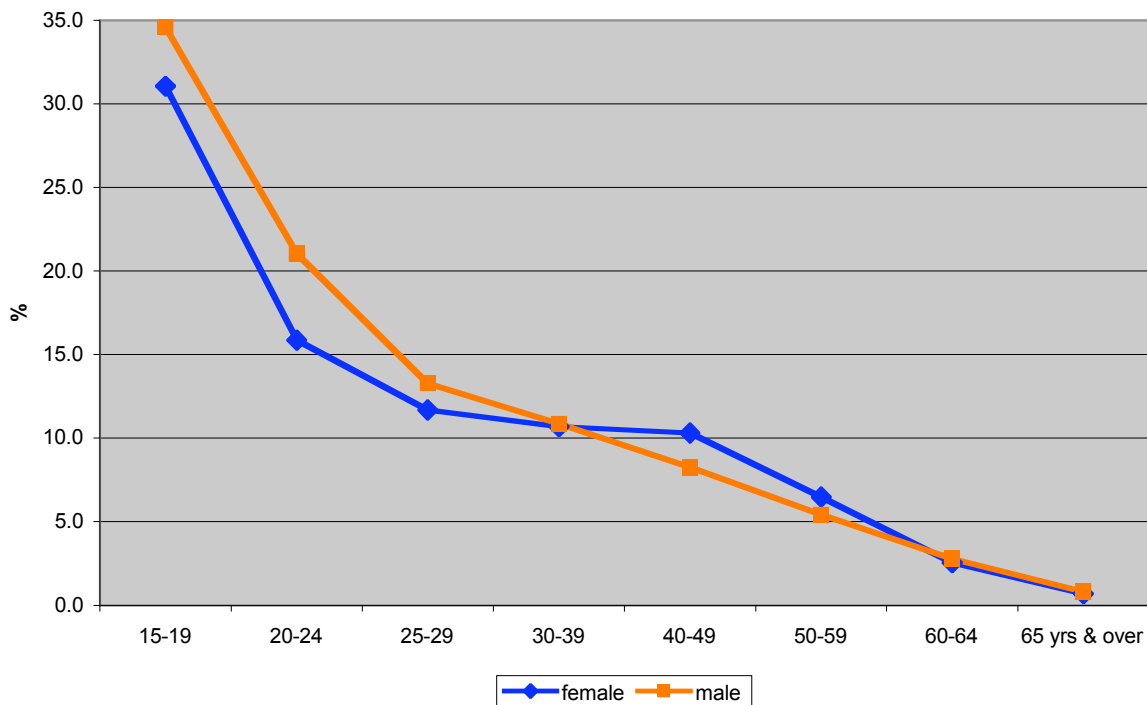


Table 14 Enrolments and per cent participation in VET across Queensland, women by age groups and main qualification

WOMEN

	<i>VET (no. enrolments)</i>							
	<i>15-19yrs</i>	<i>20-24</i>	<i>25-29</i>	<i>30-39</i>	<i>40-49</i>	<i>50-59</i>	<i>60-64</i>	<i>65 yrs & over</i>
NON-AWD	1518	2508	3069	5840	5635	3774	629	519
SUBJECT ONLY	6	1	3	4	8	8	1	
STATEMT	517	507	438	1172	1294	687	116	180
CERT I	2849	631	658	1453	1292	661	142	201
CERT II	19634	3788	2729	4973	4930	2491	334	282
CERT III	9655	6134	3741	6784	6105	2977	372	265
SENIOR	1							
CERT IV	1477	1977	2051	4429	4300	1771	148	56
DIPLOMA	4056	3649	2549	4488	3541	1451	147	113
ADV DIP	219	316	243	396	321	133	14	8
BACHELOR			1					
POST GRAD					1			
Total	39932	19511	15482	29539	27427	13953	1903	1624

	<i>Percent Participation</i>							
	<i>15-19yrs</i>	<i>20-24</i>	<i>25-29</i>	<i>30-39</i>	<i>40-49</i>	<i>50-59</i>	<i>60-64</i>	<i>65 yrs & over</i>
NON-AWD	1.2	2.0	2.3	2.1	2.1	1.8	0.8	0.2
SUBJECT ONLY	0.0	0.0	0.0	0.0	0.0	0.0	0.0	0.0
STATEMT	0.4	0.4	0.3	0.4	0.5	0.3	0.2	0.1
CERT I	2.2	0.5	0.5	0.5	0.5	0.3	0.2	0.1
CERT II	15.3	3.1	2.1	1.8	1.9	1.2	0.5	0.1
CERT III	7.5	5.0	2.8	2.5	2.3	1.4	0.5	0.1
SENIOR	0.0	0.0	0.0	0.0	0.0	0.0	0.0	0.0
CERT IV	1.1	1.6	1.5	1.6	1.6	0.8	0.2	0.0
DIPLOMA	3.2	3.0	1.9	1.6	1.3	0.7	0.2	0.0
ADV DIP	0.2	0.3	0.2	0.1	0.1	0.1	0.0	0.0
BACHELOR	0.0	0.0	0.0	0.0	0.0	0.0	0.0	0.0
POST GRAD	0.0	0.0	0.0	0.0	0.0	0.0	0.0	0.0
Total	31.1	15.9	11.7	10.7	10.3	6.5	2.6	0.7

Table 15 Enrolments and per cent participation in VET across Queensland, men by age groups and main qualification

MEN

	<i>VET</i>							
	<i>15-19 yrs</i>	<i>20-24</i>	<i>25-29</i>	<i>30-39</i>	<i>40-49</i>	<i>50-59</i>	<i>60-64</i>	<i>65 yrs & over</i>
NON-AWD	1527	1965	2344	4596	3949	2764	639	550
SUBJECT ONLY	9	3	5	17	3	3		1
STATEMT	2614	1574	1559	2814	2235	1125	184	116
CERT I	5370	1189	987	1714	1119	621	123	139
CERT II	17630	4679	3617	5925	4319	2405	430	311
CERT III	12877	10511	3766	5216	3605	2054	357	238
SENIOR	1		1					
CERT IV	1819	2220	2029	4022	3438	1773	253	78
DIPLOMA	3517	3015	2376	3732	2396	1055	146	111
ADV DIP	918	921	603	933	578	257	34	21
BACHELOR								
POST GRAD				1				
Total	46282	26077	17287	28970	21642	12057	2166	1565

	<i>Percent Participation</i>							
	<i>15-19 yrs</i>	<i>20-24</i>	<i>25-29</i>	<i>30-39</i>	<i>40-49</i>	<i>50-59</i>	<i>60-64</i>	<i>65 yrs & over</i>
NON-AWD	1.1	1.6	1.8	1.7	1.5	1.2	0.8	0.3
SUBJECT ONLY	0.0	0.0	0.0	0.0	0.0	0.0	0.0	0.0
STATEMT	2.0	1.3	1.2	1.1	0.9	0.5	0.2	0.1
CERT I	4.0	1.0	0.8	0.6	0.4	0.3	0.2	0.1
CERT II	13.2	3.8	2.8	2.2	1.6	1.1	0.6	0.2
CERT III	9.6	8.5	2.9	2.0	1.4	0.9	0.5	0.1
SENIOR	0.0	0.0	0.0	0.0	0.0	0.0	0.0	0.0
CERT IV	1.4	1.8	1.6	1.5	1.3	0.8	0.3	0.0
DIPLOMA	2.6	2.4	1.8	1.4	0.9	0.5	0.2	0.1
ADV DIP	0.7	0.7	0.5	0.3	0.2	0.1	0.0	0.0
BACHELOR	0.0	0.0	0.0	0.0	0.0	0.0	0.0	0.0
POST GRAD	0.0	0.0	0.0	0.0	0.0	0.0	0.0	0.0
Total	34.6	21.0	13.3	10.9	8.3	5.4	2.8	0.8

Figure 32 Per cent participation in VET, Queensland, women by age groups and main qualification

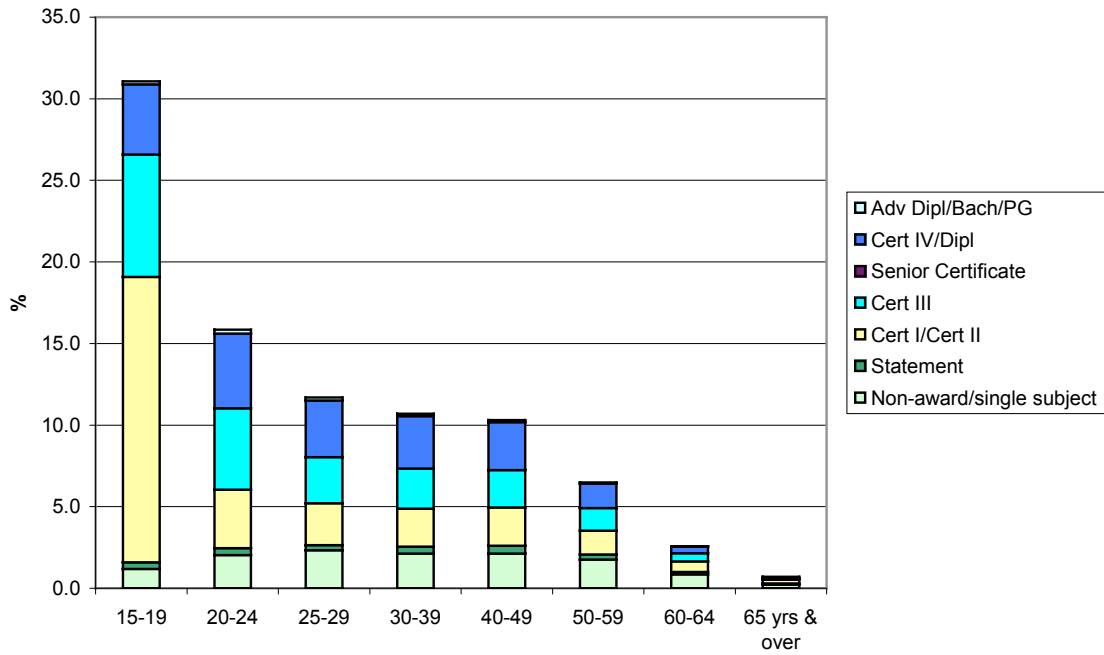


Figure 33 Per cent participation in VET, Queensland, men by age groups and main qualification

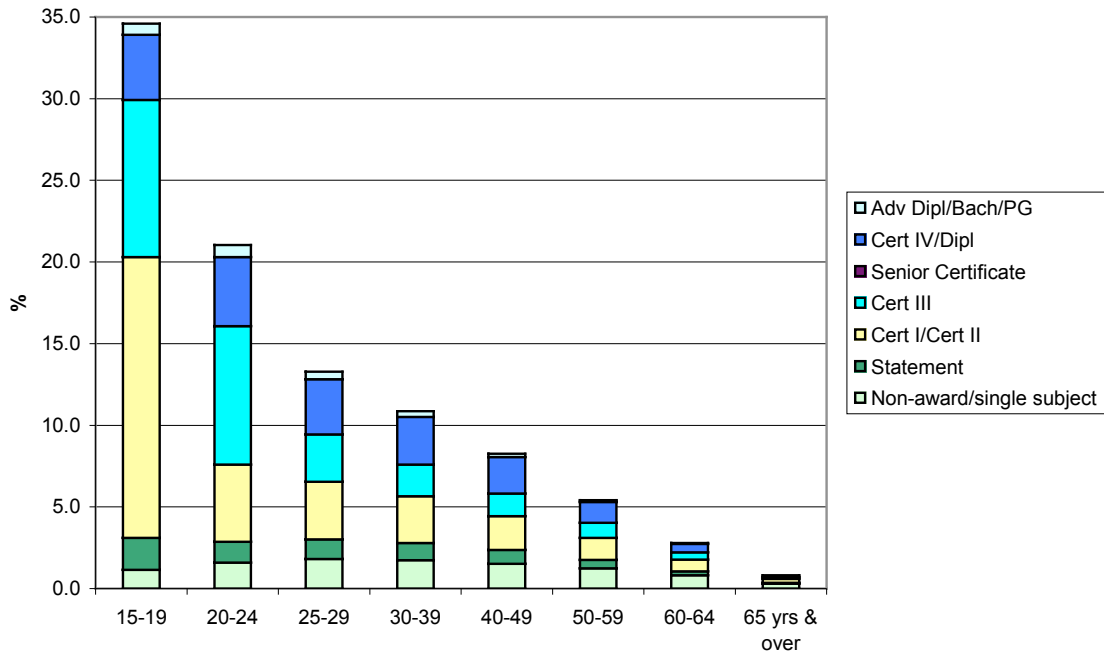


Table 16 Enrolments and per cent participation in VET across Queensland, by gender, age groups and SES quartiles

WOMEN

	VET (no. enrolments)				% Participation			
	SES quartiles				SES quartiles			
	<i>lowest</i>	<i>low</i>	<i>high</i>	<i>highest</i>	<i>lowest</i>	<i>low</i>	<i>high</i>	<i>highest</i>
15-19 yrs	8505	9389	11095	10943	33.7	35.1	31.8	26.2
20-24	3780	3934	5389	6408	17.1	17.5	16.5	14.0
25-29	2944	2888	4315	5335	12.1	11.4	12.0	11.4
30-39	6028	6399	8235	8877	11.5	11.4	11.0	9.6
40-49	5553	6082	7816	7976	11.0	11.1	10.7	9.1
50-59	2721	2992	3871	4369	6.3	6.7	6.6	6.3
60-64	393	418	503	589	2.5	2.4	2.6	2.7
65 yrs & over	279	360	444	541	0.6	0.7	0.7	0.8

MEN

	VET (no. enrolments)				% Participation			
	SES quartiles				SES quartiles			
	<i>lowest</i>	<i>low</i>	<i>high</i>	<i>highest</i>	<i>lowest</i>	<i>low</i>	<i>high</i>	<i>highest</i>
15-19 yrs	9763	11260	13057	12202	36.6	39.8	35.5	29.0
20-24	5285	5992	6979	7821	23.8	25.9	21.0	17.2
25-29	3651	4061	4445	5130	15.7	16.4	12.6	11.0
30-39	6310	7135	7641	7884	12.6	13.1	10.6	8.8
40-49	4600	5625	5875	5542	9.1	10.1	8.2	6.6
50-59	2645	2920	3223	3269	5.9	6.2	5.3	4.6
60-64	515	540	495	616	3.0	3.0	2.4	2.8
65 yrs & over	339	363	391	472	0.8	0.8	0.8	0.9

Table 17 Enrolments and % Participation in VET across Queensland, women, by age groups, SES quartiles and main qualification

WOMEN		VET (no. enrolments)				% Participation			
		SES quartiles				SES quartiles			
		lowest	low	high	highest	lowest	low	high	highest
15-19 yrs	NON-AWD	265	281	462	510	1.1	1.1	1.3	1.2
	SUBJECT ONLY	2	1	3		0.0	0.0	0.0	0.0
	STATEMT	110	150	130	127	0.4	0.6	0.4	0.3
	CERT I	639	689	846	675	2.5	2.6	2.4	1.6
	CERT II	4577	4879	5366	4812	18.1	18.3	15.4	11.5
	CERT III	1898	2309	2779	2669	7.5	8.6	8.0	6.4
	SENIOR		1			0.0	0.0	0.0	0.0
	CERT IV	289	288	383	517	1.1	1.1	1.1	1.2
	DIPLOMA	706	761	1068	1521	2.8	2.8	3.1	3.6
	ADV DIP	19	30	58	112	0.1	0.1	0.2	0.3
	BACHELOR					0.0	0.0	0.0	0.0
	POST GRAD					0.0	0.0	0.0	0.0
	Total	8505	9389	11095	10943	33.7	35.1	31.8	26.2
20-24 yrs	NON-AWD	339	317	787	1065	1.5	1.4	2.4	2.3
	SUBJECT ONLY		1			0.0	0.0	0.0	0.0
	STATEMT	108	112	121	166	0.5	0.5	0.4	0.4
	CERT I	171	138	157	165	0.8	0.6	0.5	0.4
	CERT II	905	939	975	969	4.1	4.2	3.0	2.1
	CERT III	1209	1361	1703	1861	5.5	6.1	5.2	4.1
	SENIOR					0.0	0.0	0.0	0.0
	CERT IV	374	346	533	724	1.7	1.5	1.6	1.6
	DIPLOMA	626	687	1040	1296	2.8	3.1	3.2	2.8
	ADV DIP	48	33	73	162	0.2	0.1	0.2	0.4
	BACHELOR					0.0	0.0	0.0	0.0
	POST GRAD					0.0	0.0	0.0	0.0
	Total	3780	3934	5389	6408	17.1	17.5	16.5	14.0
25-29 yrs	NON-AWD	391	359	854	1465	1.6	1.4	2.4	3.1
	SUBJECT ONLY		3			0.0	0.0	0.0	0.0
	STATEMT	78	97	118	145	0.3	0.4	0.3	0.3
	CERT I	206	129	153	170	0.8	0.5	0.4	0.4
	CERT II	641	639	729	720	2.6	2.5	2.0	1.5
	CERT III	794	771	1062	1114	3.3	3.0	3.0	2.4
	SENIOR					0.0	0.0	0.0	0.0
	CERT IV	369	374	603	705	1.5	1.5	1.7	1.5
	DIPLOMA	432	487	732	898	1.8	1.9	2.0	1.9
	ADV DIP	33	29	64	117	0.1	0.1	0.2	0.2
	BACHELOR				1	0.0	0.0	0.0	0.0
	POST GRAD					0.0	0.0	0.0	0.0
	Total	2944	2888	4315	5335	12.1	11.4	12.0	11.4
30-39 yrs	NON-AWD	859	715	1734	2532	1.6	1.3	2.3	2.7
	SUBJECT ONLY	2	1	1		0.0	0.0	0.0	0.0
	STATEMT	253	266	358	295	0.5	0.5	0.5	0.3
	CERT I	398	262	400	393	0.8	0.5	0.5	0.4
	CERT II	1162	1352	1334	1125	2.2	2.4	1.8	1.2
	CERT III	1484	1684	1873	1743	2.8	3.0	2.5	1.9
	SENIOR					0.0	0.0	0.0	0.0
	CERT IV	940	1011	1192	1286	1.8	1.8	1.6	1.4
	DIPLOMA	876	1059	1240	1313	1.7	1.9	1.7	1.4
	ADV DIP	54	49	103	190	0.1	0.1	0.1	0.2
	BACHELOR					0.0	0.0	0.0	0.0
	POST GRAD					0.0	0.0	0.0	0.0
	Total	6028	6399	8235	8877	11.5	11.4	11.0	9.6

WOMEN		VET (no. enrolments)				% Participation			
		SES quartiles				SES quartiles			
		lowest	low	high	highest	lowest	low	high	highest
40-49 yrs	NON-AWD	896	693	1764	2282	1.8	1.3	2.4	2.6
	SUBJECT ONLY		4	3	1	0.0	0.0	0.0	0.0
	STATEMT	279	321	334	360	0.6	0.6	0.5	0.4
	CERT I	301	240	366	385	0.6	0.4	0.5	0.4
	CERT II	1136	1322	1333	1139	2.2	2.4	1.8	1.3
	CERT III	1301	1569	1711	1524	2.6	2.9	2.3	1.7
	SENIOR					0.0	0.0	0.0	0.0
	CERT IV	931	970	1209	1190	1.8	1.8	1.6	1.4
	DIPLOMA	651	925	1021	944	1.3	1.7	1.4	1.1
	ADV DIP	57	38	75	151	0.1	0.1	0.1	0.2
	BACHELOR					0.0	0.0	0.0	0.0
	POST GRAD	1				0.0	0.0	0.0	0.0
	Total	5553	6082	7816	7976	11.0	11.1	10.7	9.1
50-59 yrs	NON-AWD	556	415	1163	1640	1.3	0.9	2.0	2.4
	SUBJECT ONLY	3		2	3	0.0	0.0	0.0	0.0
	STATEMT	150	139	183	215	0.3	0.3	0.3	0.3
	CERT I	181	117	168	195	0.4	0.3	0.3	0.3
	CERT II	538	724	669	560	1.3	1.6	1.1	0.8
	CERT III	611	808	777	781	1.4	1.8	1.3	1.1
	SENIOR					0.0	0.0	0.0	0.0
	CERT IV	373	412	447	539	0.9	0.9	0.8	0.8
	DIPLOMA	290	362	430	369	0.7	0.8	0.7	0.5
	ADV DIP	19	15	32	67	0.0	0.0	0.1	0.1
	BACHELOR					0.0	0.0	0.0	0.0
	POST GRAD					0.0	0.0	0.0	0.0
	Total	2721	2992	3871	4369	6.3	6.7	6.6	6.3
60-64 yrs	NON-AWD	112	64	205	248	0.7	0.4	1.0	1.2
	SUBJECT ONLY				1	0.0	0.0	0.0	0.0
	STATEMT	26	28	16	46	0.2	0.2	0.1	0.2
	CERT I	38	23	25	56	0.2	0.1	0.1	0.3
	CERT II	73	111	95	55	0.5	0.6	0.5	0.3
	CERT III	78	112	84	98	0.5	0.7	0.4	0.5
	SENIOR					0.0	0.0	0.0	0.0
	CERT IV	25	34	44	45	0.2	0.2	0.2	0.2
	DIPLOMA	38	45	32	32	0.2	0.3	0.2	0.1
	ADV DIP	3	1	2	8	0.0	0.0	0.0	0.0
	BACHELOR					0.0	0.0	0.0	0.0
	POST GRAD					0.0	0.0	0.0	0.0
	Total	393	418	503	589	2.5	2.4	2.6	2.7
65 yrs & over	NON-AWD	75	74	169	201	0.2	0.1	0.3	0.3
	SUBJECT ONLY					0.0	0.0	0.0	0.0
	STATEMT	30	38	38	74	0.1	0.1	0.1	0.1
	CERT I	30	21	43	107	0.1	0.0	0.1	0.2
	CERT II	56	106	76	44	0.1	0.2	0.1	0.1
	CERT III	52	68	70	75	0.1	0.1	0.1	0.1
	SENIOR					0.0	0.0	0.0	0.0
	CERT IV	10	11	21	14	0.0	0.0	0.0	0.0
	DIPLOMA	26	40	25	22	0.1	0.1	0.0	0.0
	ADV DIP		2	2	4	0.0	0.0	0.0	0.0
	BACHELOR					0.0	0.0	0.0	0.0
	Total	279	360	444	541	0.6	0.7	0.7	0.8

Table 18 Enrolments and per cent participation in VET across Queensland, men, by age groups, SES quartiles and main qualification

MEN		VET (no. enrolments)				% Participation			
		SES quartiles				SES quartiles			
		lowest	low	high	highest	lowest	low	high	highest
15-19 yrs	NON-AWD	282	271	502	472	1.1	1.0	1.4	1.1
	SUBJECT ONLY		4	3	2	0.0	0.0	0.0	0.0
	STATEMT	651	725	633	605	2.4	2.6	1.7	1.4
	CERT I	1197	1495	1414	1264	4.5	5.3	3.8	3.0
	CERT II	4172	4304	5008	4146	15.7	15.2	13.6	9.9
	CERT III	2471	3225	3895	3286	9.3	11.4	10.6	7.8
	SENIOR				1	0.0	0.0	0.0	0.0
	CERT IV	261	507	459	592	1.0	1.8	1.2	1.4
	DIPLOMA	575	552	925	1465	2.2	1.9	2.5	3.5
	ADV DIP	154	177	218	369	0.6	0.6	0.6	0.9
	BACHELOR					0.0	0.0	0.0	0.0
	POST GRAD					0.0	0.0	0.0	0.0
	Total		9763	11260	13057	12202	36.6	39.8	35.5
20-24 yrs	NON-AWD	415	461	490	599	1.9	2.0	1.5	1.3
	SUBJECT ONLY		2	1		0.0	0.0	0.0	0.0
	STATEMT	319	372	440	443	1.4	1.6	1.3	1.0
	CERT I	341	343	265	240	1.5	1.5	0.8	0.5
	CERT II	1195	1208	1183	1093	5.4	5.2	3.6	2.4
	CERT III	1983	2358	3083	3087	8.9	10.2	9.3	6.8
	SENIOR					0.0	0.0	0.0	0.0
	CERT IV	356	612	577	675	1.6	2.6	1.7	1.5
	DIPLOMA	510	515	696	1294	2.3	2.2	2.1	2.9
	ADV DIP	166	121	244	390	0.7	0.5	0.7	0.9
	BACHELOR					0.0	0.0	0.0	0.0
	POST GRAD					0.0	0.0	0.0	0.0
	Total		5285	5992	6979	7821	23.8	25.9	21.0
25-29 yrs	NON-AWD	458	571	530	785	2.0	2.3	1.5	1.7
	SUBJECT ONLY		3	1	1	0.0	0.0	0.0	0.0
	STATEMT	279	373	447	460	1.2	1.5	1.3	1.0
	CERT I	356	254	188	189	1.5	1.0	0.5	0.4
	CERT II	964	941	827	885	4.1	3.8	2.3	1.9
	CERT III	769	878	1118	1001	3.3	3.5	3.2	2.1
	SENIOR			1		0.0	0.0	0.0	0.0
	CERT IV	328	523	542	636	1.4	2.1	1.5	1.4
	DIPLOMA	408	443	628	897	1.8	1.8	1.8	1.9
	ADV DIP	89	75	163	276	0.4	0.3	0.5	0.6
	BACHELOR					0.0	0.0	0.0	0.0
	POST GRAD					0.0	0.0	0.0	0.0
	Total		3651	4061	4445	5130	15.7	16.4	12.6
30-39 yrs	NON-AWD	850	1101	1160	1485	1.7	2.0	1.6	1.6
	SUBJECT ONLY		9	4	4	0.0	0.0	0.0	0.0
	STATEMT	574	717	735	788	1.1	1.3	1.0	0.9
	CERT I	515	456	381	362	1.0	0.8	0.5	0.4
	CERT II	1660	1531	1404	1330	3.3	2.8	1.9	1.5
	CERT III	1195	1360	1484	1177	2.4	2.5	2.1	1.3
	SENIOR					0.0	0.0	0.0	0.0
	CERT IV	676	1058	1166	1122	1.3	1.9	1.6	1.2
	DIPLOMA	673	757	1049	1253	1.3	1.4	1.5	1.4
	ADV DIP	167	146	258	362	0.3	0.3	0.4	0.4
	BACHELOR					0.0	0.0	0.0	0.0
	POST GRAD				1	0.0	0.0	0.0	0.0
	Total		6310	7135	7641	7884	12.6	13.1	10.6

MEN		VET (no. enrolments)				% Participation			
		SES quartiles				SES quartiles			
		lowest	low	high	highest	lowest	low	high	highest
40-49 yrs	NON-AWD	691	910	1092	1256	1.4	1.6	1.5	1.5
	SUBJECT ONLY		3			0.0	0.0	0.0	0.0
	STATEMT	420	559	649	607	0.8	1.0	0.9	0.7
	CERT I	330	313	249	227	0.7	0.6	0.3	0.3
	CERT II	1197	1127	1063	932	2.4	2.0	1.5	1.1
	CERT III	819	1016	1032	738	1.6	1.8	1.4	0.9
	SENIOR					0.0	0.0	0.0	0.0
	CERT IV	614	1035	935	854	1.2	1.9	1.3	1.0
	DIPLOMA	427	574	682	713	0.8	1.0	1.0	0.9
	ADV DIP	102	88	173	215	0.2	0.2	0.2	0.3
	BACHELOR					0.0	0.0	0.0	0.0
	POST GRAD					0.0	0.0	0.0	0.0
Total		4600	5625	5875	5542	9.1	10.1	8.2	6.6
50-59 yrs	NON-AWD	454	545	757	1008	1.0	1.2	1.3	1.4
	SUBJECT ONLY			1	2	0.0	0.0	0.0	0.0
	STATEMT	229	269	324	303	0.5	0.6	0.5	0.4
	CERT I	182	149	166	124	0.4	0.3	0.3	0.2
	CERT II	697	628	563	517	1.6	1.3	0.9	0.7
	CERT III	510	556	573	415	1.1	1.2	1.0	0.6
	SENIOR					0.0	0.0	0.0	0.0
	CERT IV	346	471	467	489	0.8	1.0	0.8	0.7
	DIPLOMA	193	258	295	309	0.4	0.6	0.5	0.4
	ADV DIP	34	44	77	102	0.1	0.1	0.1	0.1
	BACHELOR					0.0	0.0	0.0	0.0
	POST GRAD					0.0	0.0	0.0	0.0
Total		2645	2920	3223	3269	5.9	6.2	5.3	4.6
60-64 yrs	NON-AWD	109	117	165	248	0.6	0.7	0.8	1.1
	SUBJECT ONLY					0.0	0.0	0.0	0.0
	STATEMT	45	46	41	52	0.3	0.3	0.2	0.2
	CERT I	43	21	24	35	0.2	0.1	0.1	0.2
	CERT II	137	136	69	88	0.8	0.8	0.3	0.4
	CERT III	101	103	89	64	0.6	0.6	0.4	0.3
	SENIOR					0.0	0.0	0.0	0.0
	CERT IV	44	71	65	73	0.3	0.4	0.3	0.3
	DIPLOMA	33	39	33	41	0.2	0.2	0.2	0.2
	ADV DIP	3	7	9	15	0.0	0.0	0.0	0.1
	BACHELOR					0.0	0.0	0.0	0.0
	POST GRAD					0.0	0.0	0.0	0.0
Total		515	540	495	616	3.0	3.0	2.4	2.8
65 yrs & over	NON-AWD	97	69	171	213	0.2	0.2	0.3	0.4
	SUBJECT ONLY				1	0.0	0.0	0.0	0.0
	STATEMT	30	27	22	37	0.1	0.1	0.0	0.1
	CERT I	46	19	25	49	0.1	0.0	0.0	0.1
	CERT II	78	119	70	44	0.2	0.3	0.1	0.1
	CERT III	43	74	60	61	0.1	0.2	0.1	0.1
	SENIOR					0.0	0.0	0.0	0.0
	CERT IV	19	19	18	22	0.0	0.0	0.0	0.0
	DIPLOMA	25	33	19	34	0.1	0.1	0.0	0.1
	ADV DIP	1	3	6	11	0.0	0.0	0.0	0.0
	BACHELOR					0.0	0.0	0.0	0.0
	Total		339	363	391	472	0.8	0.8	0.8

Figure 34 Per cent participation in VET, women, 15-19 years, Queensland, by SES quartiles

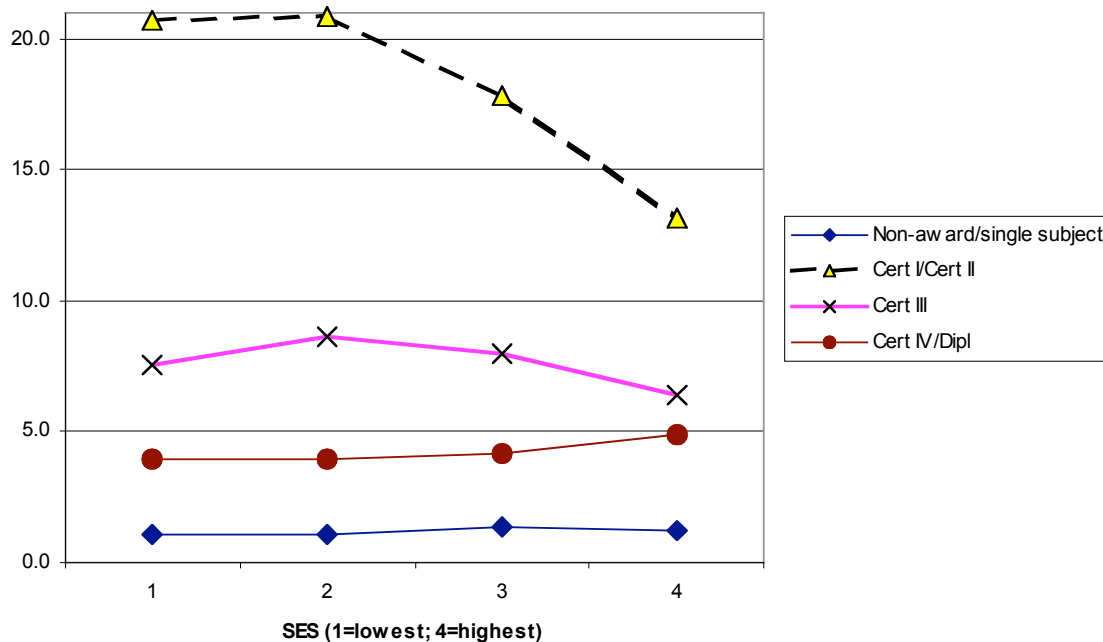


Figure 35 Per cent participation in VET, men, 15-19 years, Queensland, by SES quartiles

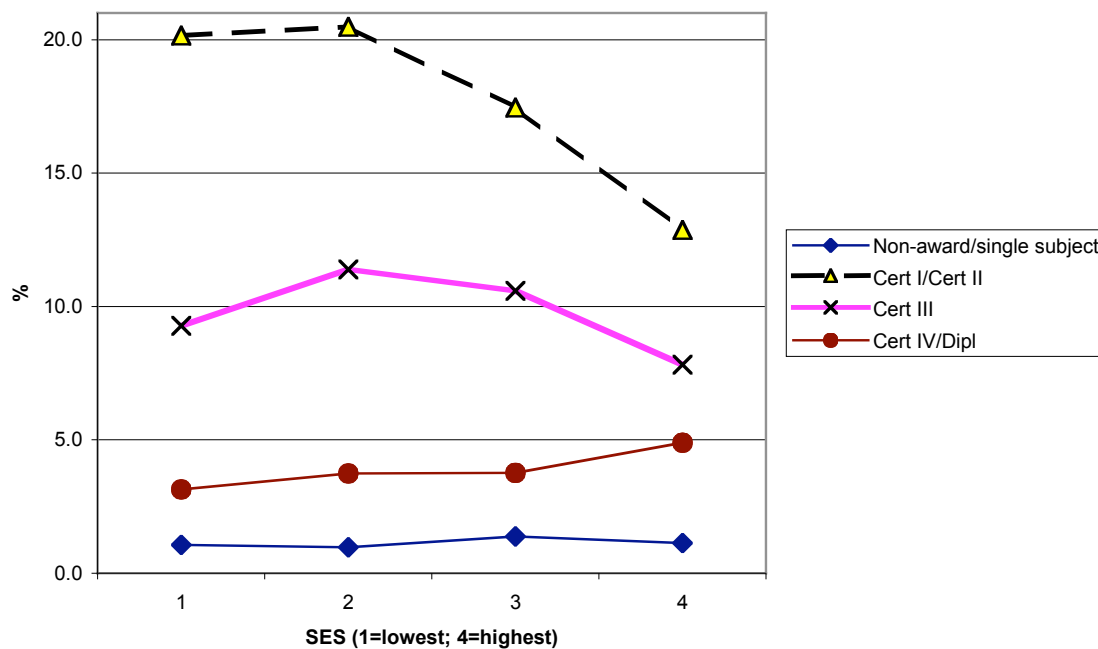


Figure 36 Per cent participation in VET, women, 20-24 years, Queensland, by SES quartiles

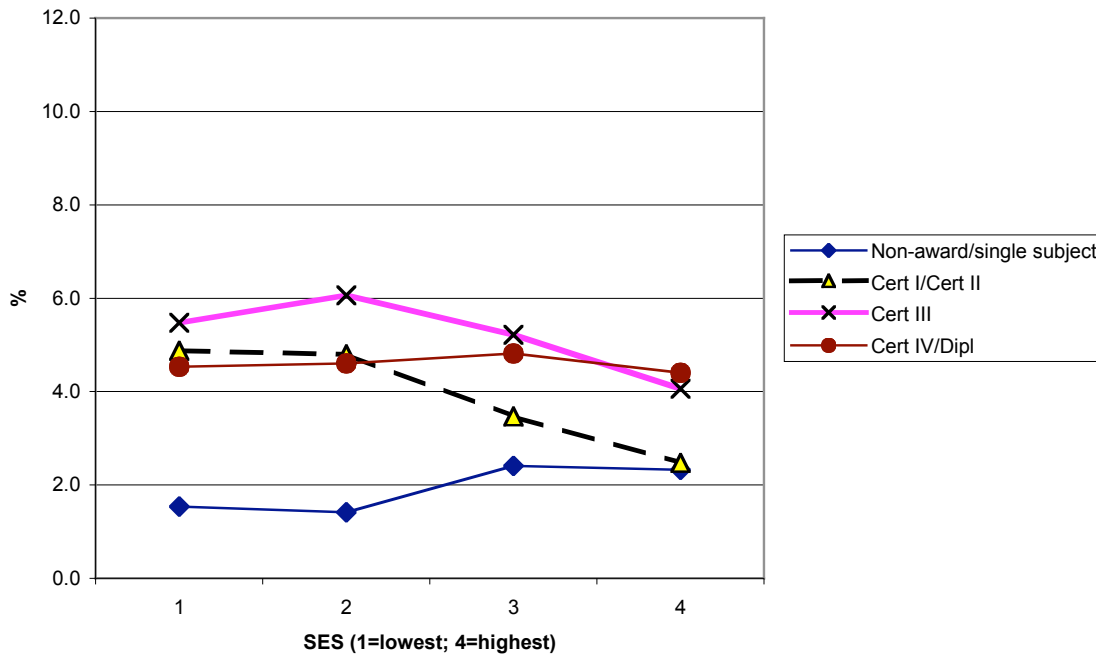


Figure 37 Per cent participation in VET, men, 20-24 years, Queensland, by SES quartiles

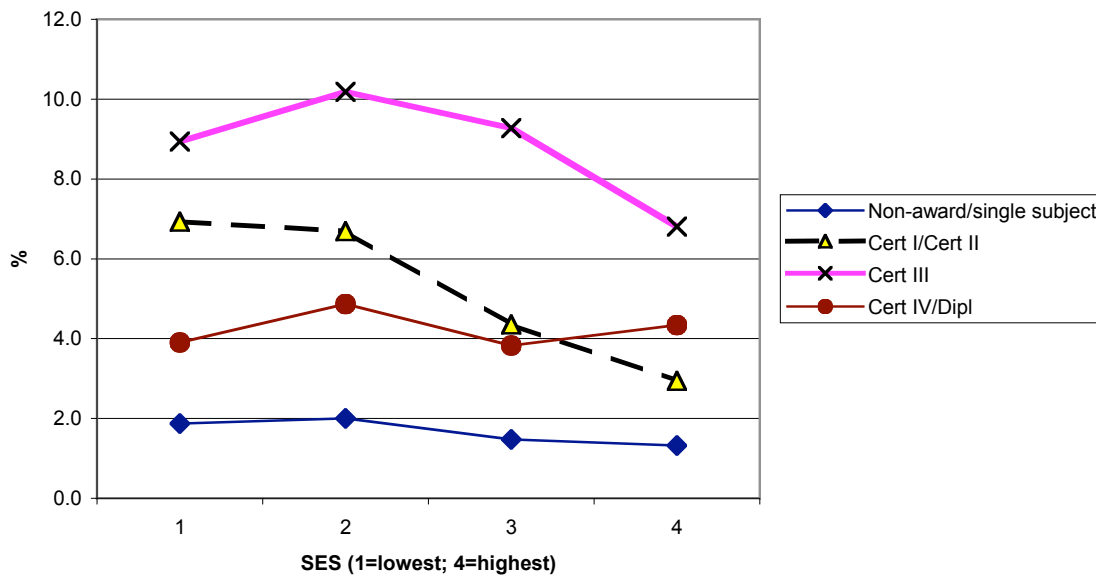


Figure 38 Per cent participation in VET, women, 25-29 years, Queensland, by SES quartiles

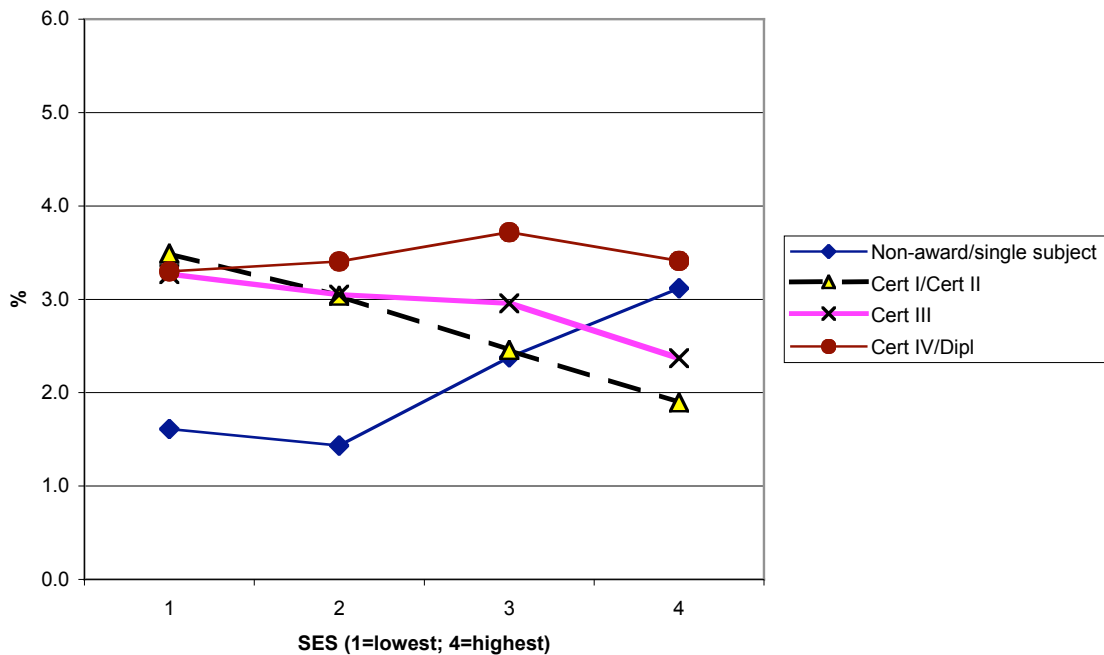


Figure 39 Per cent participation in VET, men, 25-29 years, Queensland, by SES quartiles

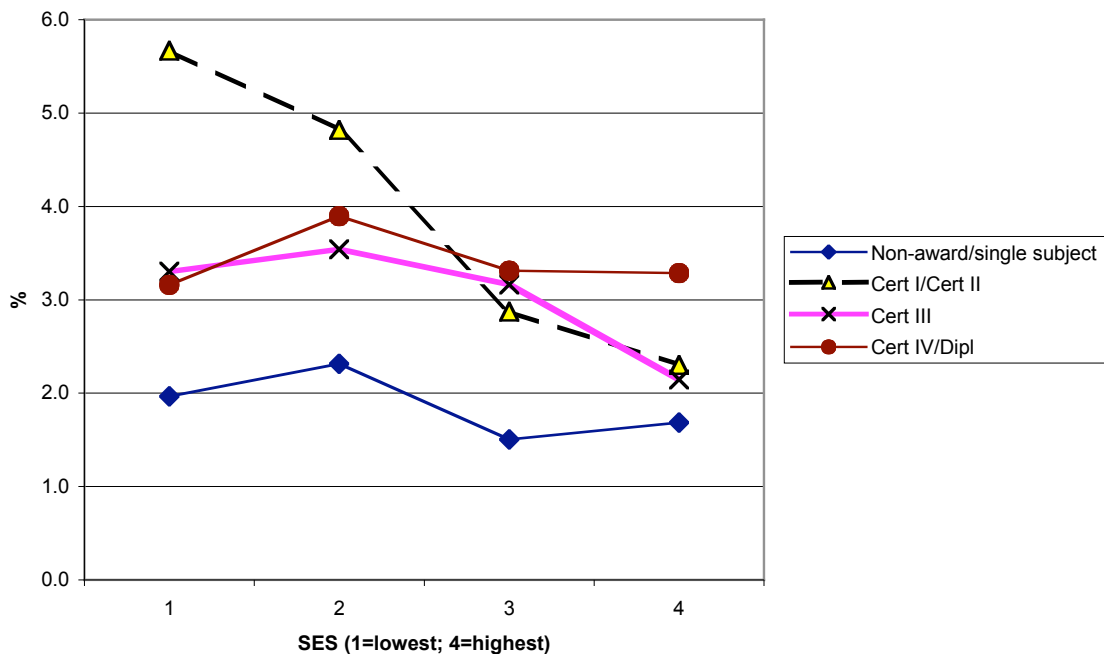


Figure 40 Per cent participation in VET, women, 30-39 years, Queensland, by SES quartiles

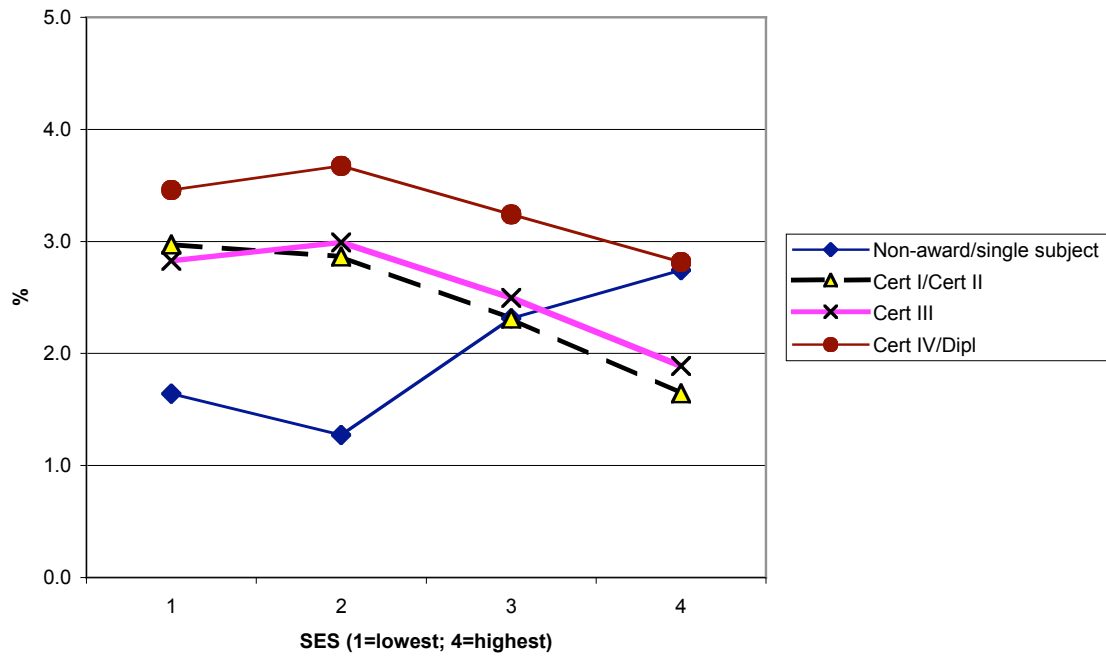


Figure 41 Per cent participation in VET, men, 30-39 years, Queensland, by SES quartiles

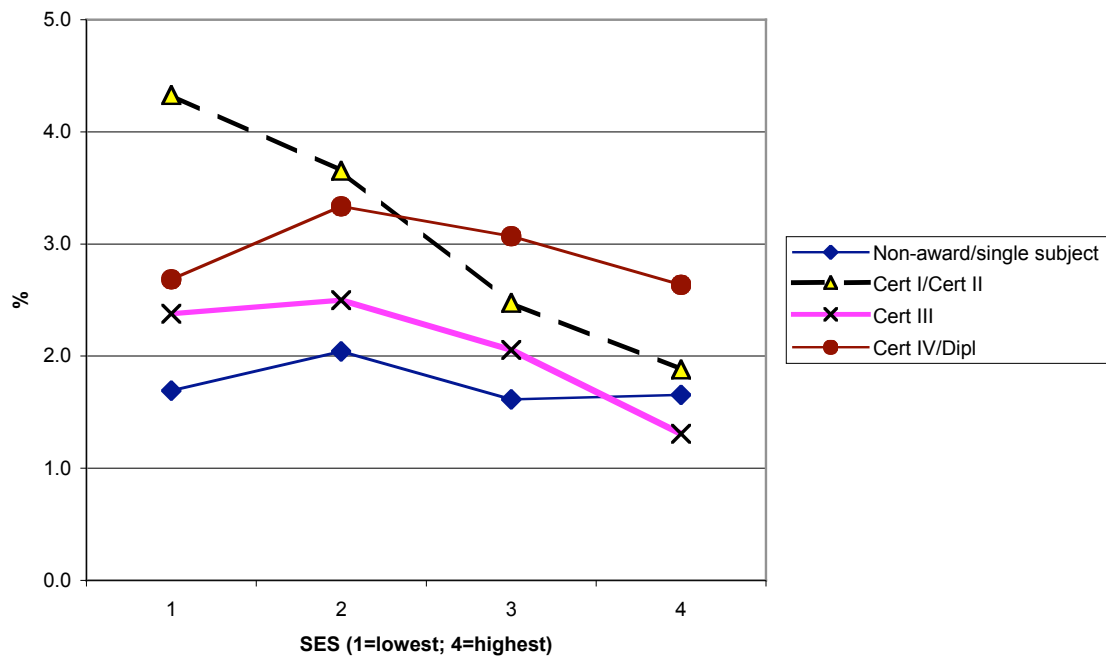


Figure 42 Per cent participation in VET, women, 40-49 years, Queensland, by SES quartiles

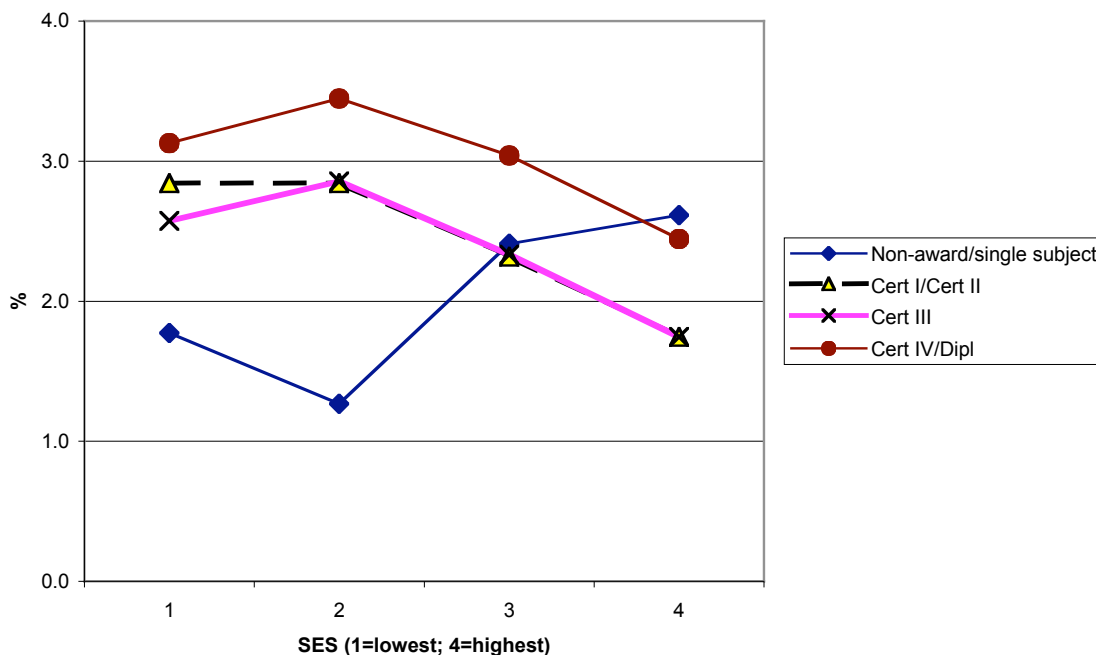


Figure 43 Per cent participation in VET, men, 40-49 years, Queensland, by SES quartiles

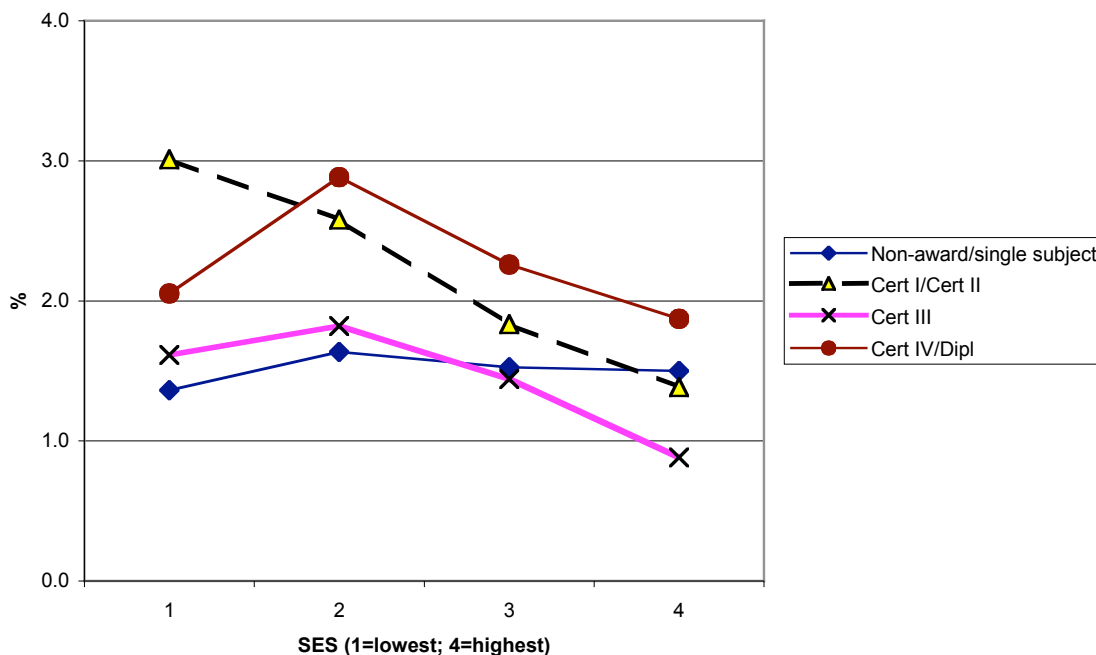


Figure 44 Per cent participation in VET, women, 50-59 years, Queensland, by SES quartiles

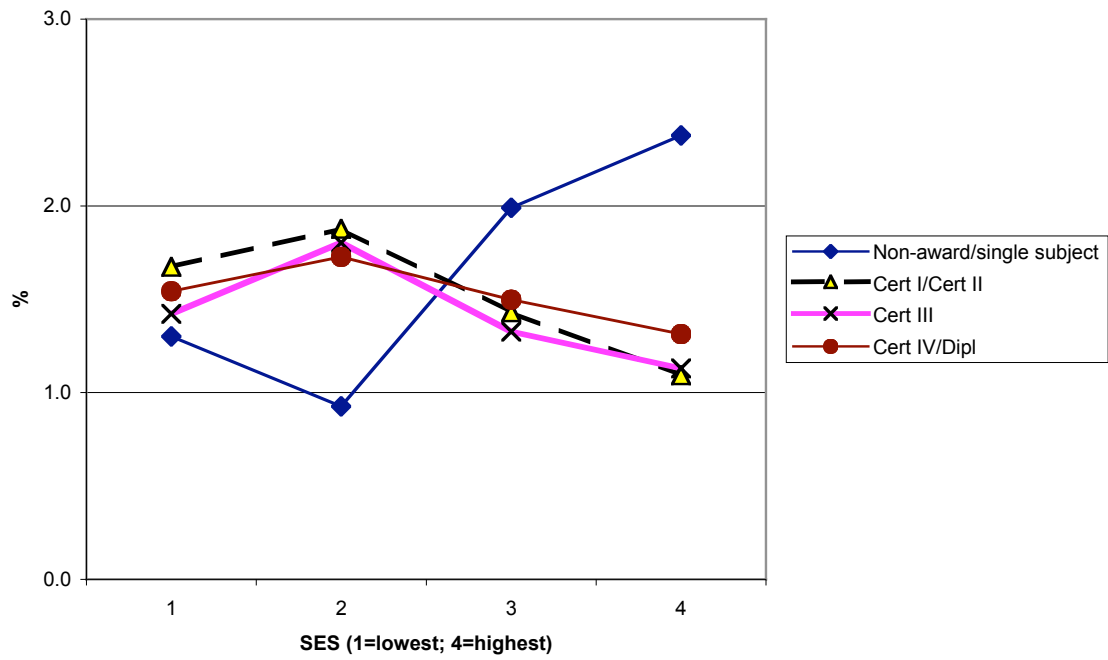


Figure 45 Per cent participation in VET, men, 50-59 years, Queensland, by SES quartiles

